

Snap-Loc Systems

*Adjustable Length And
Interchangeable
Components*



Snap-Loc Systems

Adjustable Length And Interchangeable Components With Easy Hand Assembly

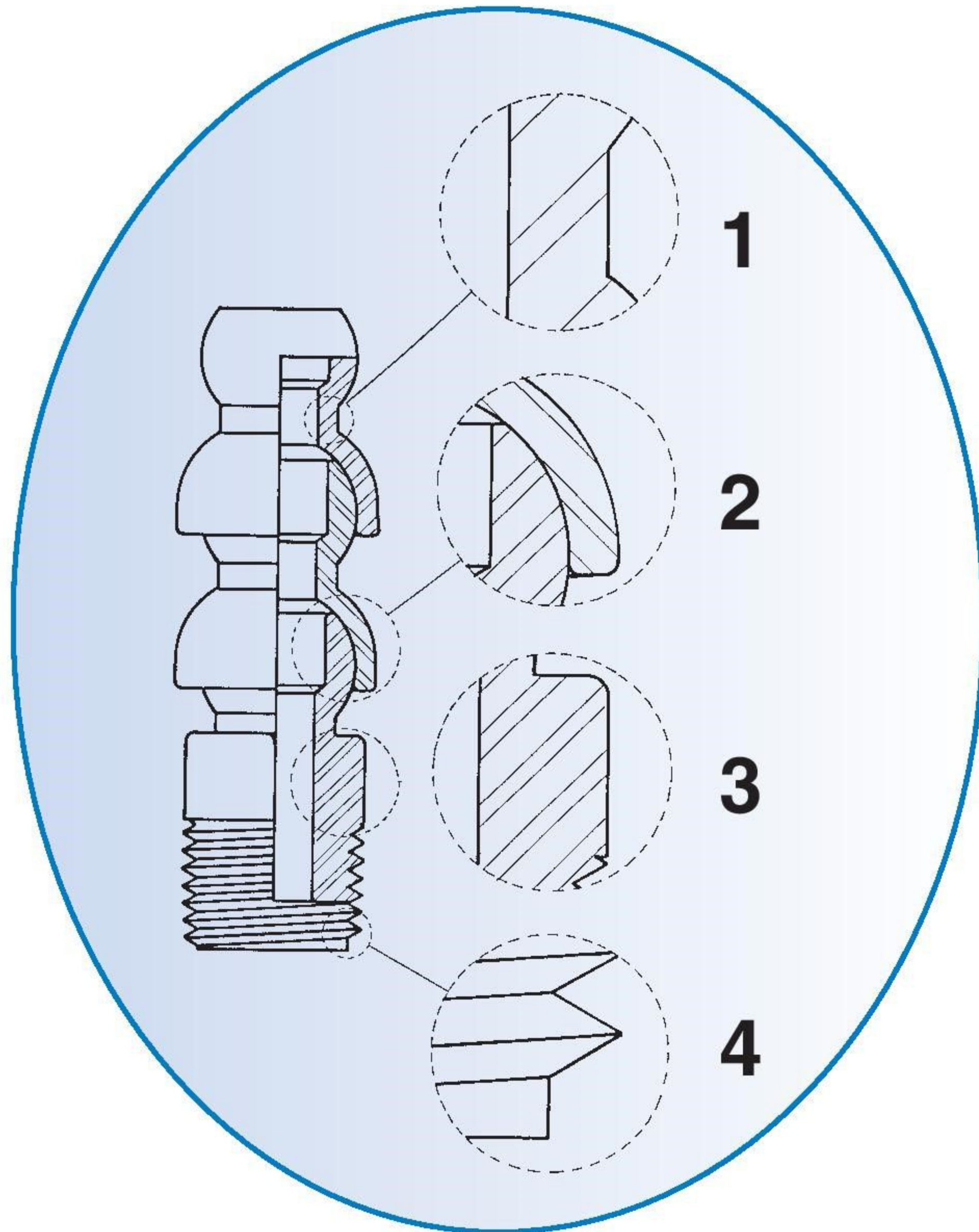


Fig. 1 Heavy-Duty Construction

Industrial grade wall thickness provides durable parts with long lasting performance.

Fig. 2 Bearing Surface & Snap Fit

Contribute to outstanding performance with respect to “jetting” and holding power. Snap-Loc Systems are designed for normal shop air and fluid pressures.

Fig. 3 Solid Hex Design

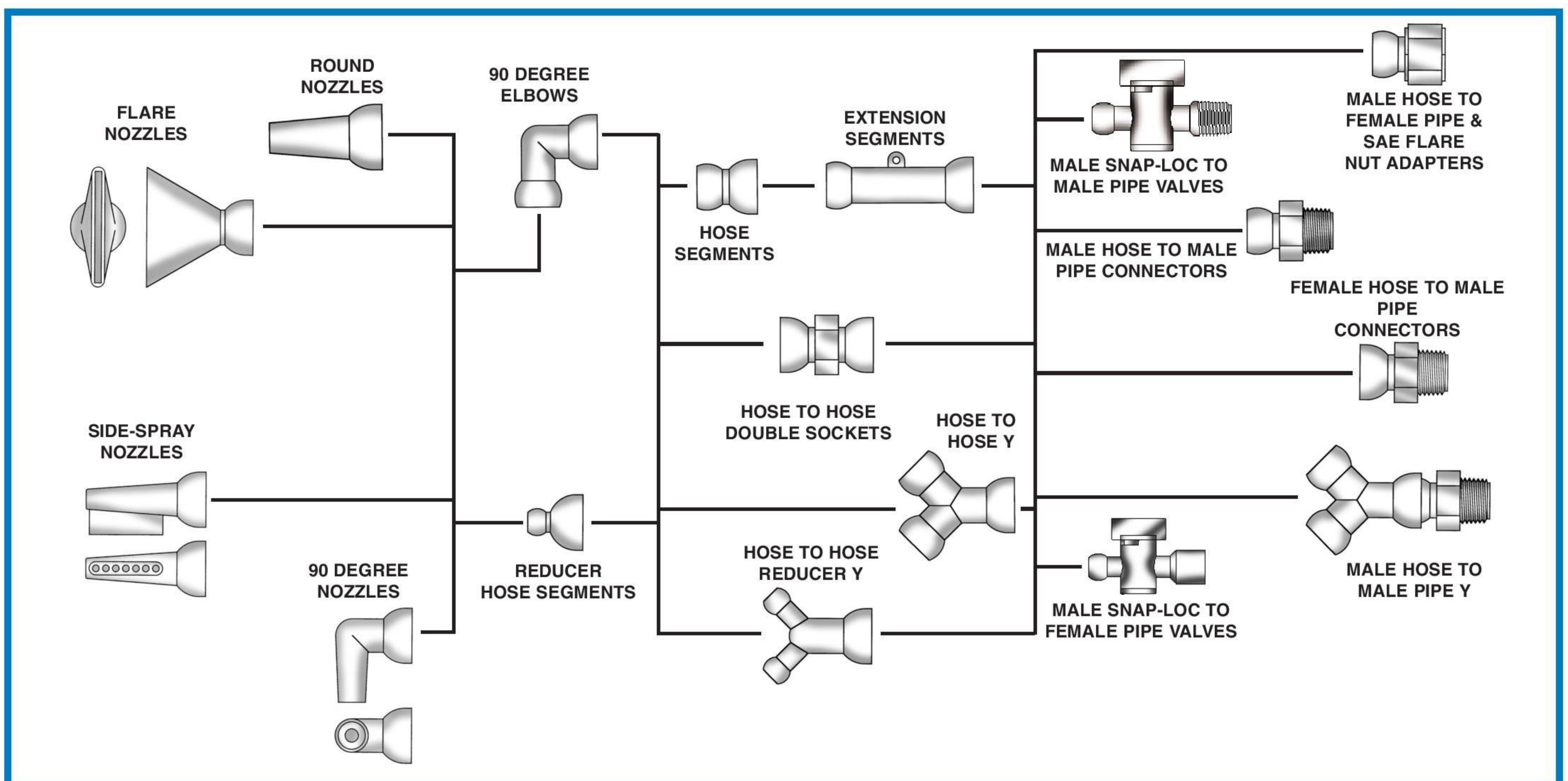
This solid hex design is superior to a ribbed design because it has less tendency to strip.

Fig. 4 Durable Thread Design

Cedarberg Snap-Loc Systems have milled, not turned, threads. This results in better starting threads, and less cross threading. Threads are easier to re-use.

FEATURES:

- Industrial Grade
- Adjustable Length
- Easy Hand Assembly
- Unrestricted Flow
- No Vibration Wandering
- Chemical Resistance
- Electrically Non-Conductive
- 3-Dimensional Adjustability



Snap-Loc Systems

*More Than
Just A
Coolant Hose...*



- Flexible Arms
- Air / Liquid / Vacuum Hose

- Goosenecks
- Support Armatures

...An Element Of Ingenuity.

MORE THAN JUST A COOLANT HOSE...

- Since the beginning, Cedarberg Snap-Loc Systems have served metalworking industries world-wide. However, the 3-dimensional flexibility and holding power of our design serves well in a wide range of applications. We work with product designers in many fields because our Snap-Loc Systems are...
...An Element of Ingenuity.

INTERCHANGEABLE COMPONENTS:

- Snap-Loc components are interchangeable; Reducers are available for 3/4" to 1/2" hose, and for 1/2" to 1/4" hose, allowing for the use of all three hose sizes in a single installation.

EASY HAND ASSEMBLY:

- Snap-Loc assembly and disassembly is fast and easy. Assembly Pliers are available for the 1/4" and 1/2" Systems. The Universal Assembly Tool can be used for assembly of 1/4", 1/2" and 3/4" Systems. Separation Wedges for each of the three hose sizes simplify disassembly (Pg. 10).

HOSE BEND CAPABILITIES:

- Snap-Loc hose may be bent to form tight turns. Minimum center-line diameters are as follows:
 - 1/4" Hose; 2" center-line diameter
 - 1/2" Hose; 3-1/4" center-line diameter
 - 3/4" Hose; 5-1/4" center-line diameter

MATERIALS:

- Standard Snap-Loc Hose and Connector material is Delrin. Standard Nozzle material is polypropylene. Consult factory for alternate material availability.

CHEMICAL RESISTANCE:

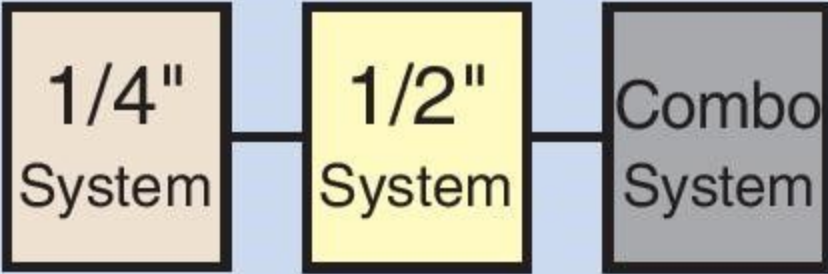
- Delrin exhibits superior chemical resistance to alcohols, aldehydes, esters, ethers, hydrocarbons (gasolines, lubricants, hydraulic fluid), agricultural chemicals, many weak acids and bases.
- Polypropylene provides good chemical resistance to a wide variety of chemical products, including alkalies, solvents, as well as acids.

WORKING PRESSURES:

- Snap-Loc Systems components are designed for normal shop air and fluid pressures. They are not intended for high pressure applications. Maximum operating pressure is dependent upon many factors, including temperature of solution, hose and nozzle size, and whether pressure is induced slowly or instantaneously.

WORKING TEMPERATURES:

- Maximum recommended working Temperature for Snap-Loc Systems is approximately 200° F (93°C).



For Coolant Hose Set-Up And Quick Maintenance

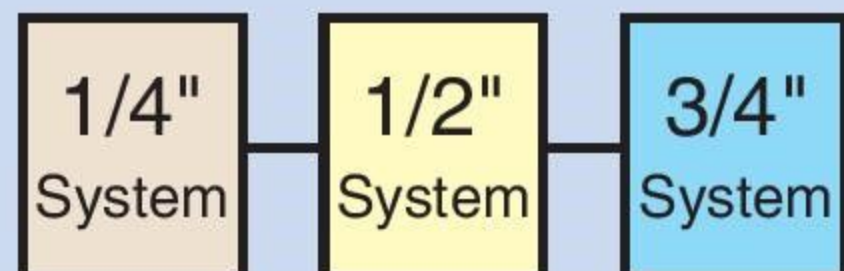


CAT. NO.	QTY	DESCRIPTION	CODE
8525-282		Kit Includes:	AB
	4	1/4" x 12" Hose Assy	
	1	1/4" Extension Segment	
	2	1/16" Round Nozzle	
	2	1/8" Round Nozzle	
	2	1/4" Round Nozzle	
	2	1" Flare Nozzle	
	3	1/8" Connector	
	3	1/4" Connector	
	2	1/4" Y	
	1	1/4" Double Socket	
	1	1/4" Assembly Pliers	

CAT. NO.	QTY	DESCRIPTION	CODE
8550-321		Kit Includes:	AB
	4	1/2" x 12" Hose Assy	
	1	1/2" Extension Segment	
	2	1/4" Round Nozzle	
	2	3/8" Round Nozzle	
	2	1/2" Round Nozzle	
	2	2" Flare Nozzle	
	3	3/8" Connector	
	3	1/2" Connector	
	2	1/2" Y	
	1	1/2" Y X 1/4" Reducer Y	
	1	1/2" Double Socket	
	1	1/2" x 1/4" Adapter	
	1	1/2" Assembly Pliers	

CAT. NO.	QTY	DESCRIPTION	CODE
8550-322		Kit Includes:	AB
	3	1/4" x 12" Hose Assy	
	3	1/2" x 12" Hose Assy	
	1	1/4" Extension Segment	
	1	1/2" Extension Segment	
	2	1/4" x 1/16" Round Nozzle	
	2	1/4" x 1/8" Round Nozzle	
	2	1/4" x 1/4" Round Nozzle	
	2	1/2" x 1/4" Round Nozzle	
	2	1/2" x 3/8" Round Nozzle	
	2	1/2" x 1/2" Round Nozzle	
	2	1/4" x 1" Flare Nozzle	
	2	1/2" x 2" Flare Nozzle	
	3	1/4" x 1/8" Connector	
	3	1/4" x 1/4" Connector	
	3	1/2" x 3/8" Connector	
	3	1/2" x 1/2" Connector	
	1	1/4" Y	
	1	1/2" Y	
	1	1/2" x 1/4" Reducer Y	
	1	1/4" Double Socket	
	1	1/2" Double Socket	
	1	1/2" x 1/4" Adapter	
	1	1/4" Assembly Pliers	
	1	1/2" Assembly Pliers	

Standard Material: Delrin 500
Polypropylene Available: Consult Factory
Standard Color: NPT Connectors Light Gray,
 BSPT Connectors Dark Gray, Hose Segments
 Dark Gray
 Other Colors Available (Consult Factory)



Round Nozzles



Flare Nozzles

[illegible][illegible][illegible]

Standard Material: Polypropylene
Delrin 500 Available: Consult Factory
Standard Color: Light Gray, Other Colors Available

[illegible][illegible][illegible]

CAT. NO.	DESCRIPTION	CODE
	1/4" 90° Elbow; Female Hose x Male Hose	
8425-181	Pac of 2	AB
8425-182	Bag of 25	AB

CAT. NO.	DESCRIPTION	CODE
	1/2" 90° Elbow; Female Hose x Male Hose	
8450-196	Pac of 2	AB
8450-197	Bag of 2	

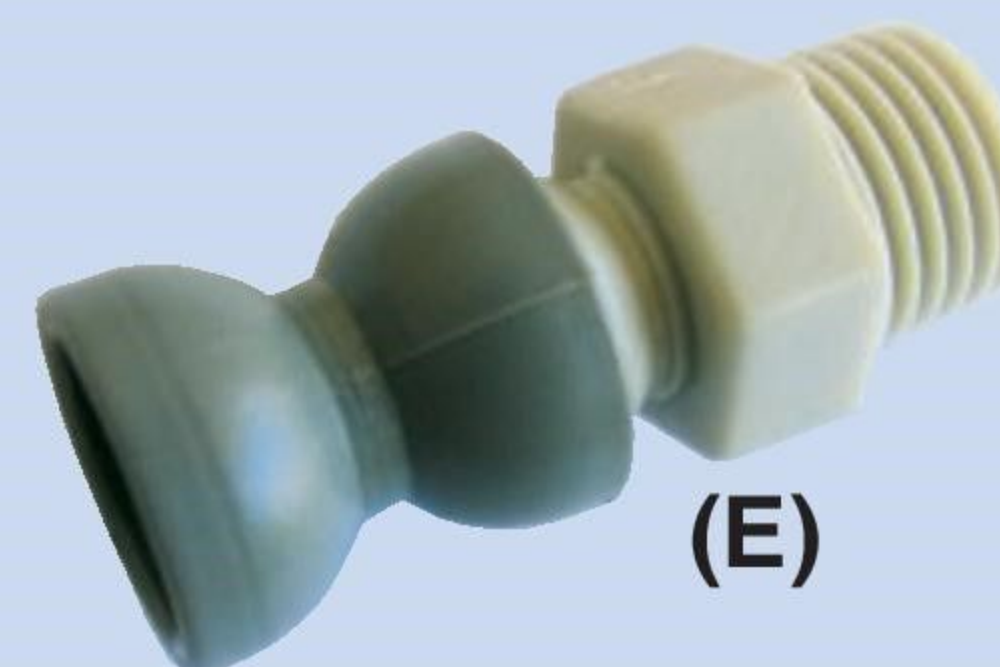
CAT. NO.	DESCRIPTION	CODE
	90° Nozzles	
8450-198	1/2" x 1/4" 90° Nozzles Pac of 2	AC
8450-199	1/2" x 1/4" 90° Nozzles Bag of 25	AC
8450-200	1/2" x 3/8" 90° Nozzles Pac of 2	AC
8450-201	1/2" x 3/8" 90° Nozzles Bag of 25	AC

BENEFITS - 90° FITTINGS:

- Excellent for tight turns where space is limited.

CAT. NO.	DESCRIPTION	CODE
	Side Spray Nozzles	
8425-187	1/4" Side Spray Nozzles Pac of 2	AC
8425-188	1/4" Side Spray Nozzles Bag of 25	AC

CAT. NO.	DESCRIPTION	CODE
	Side Spray Nozzles	
8450-202	1/2" Side Spray Nozzles Pac of 2	AC
8450-203	1/2" Side Spray Nozzles Bag of 25	AC



Connectors

[illegible]

Standard Material: Delrin 500
Polypropylene Available: Consult Factory
Standard Color: NPT Connectors Light Gray,
 BSPT Connectors Dark Gray, Hose Segments
 Dark Gray

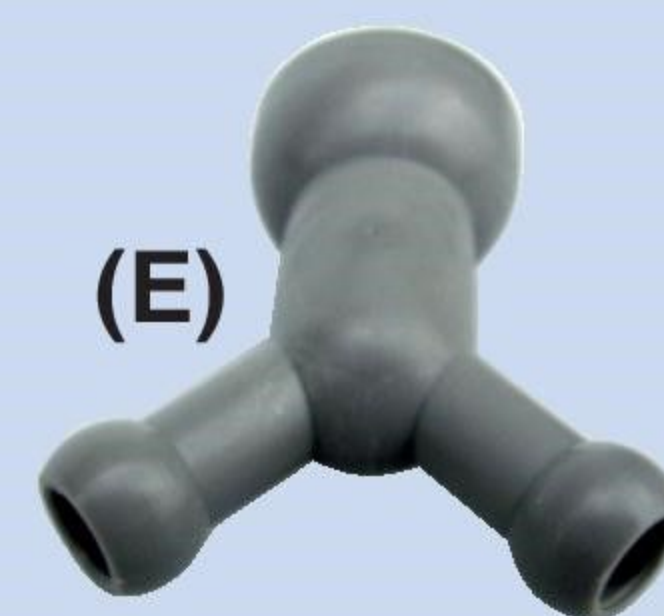
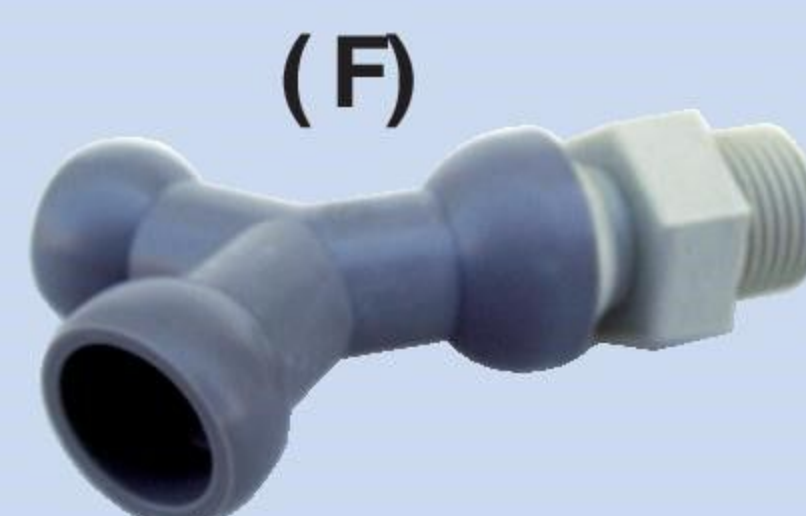
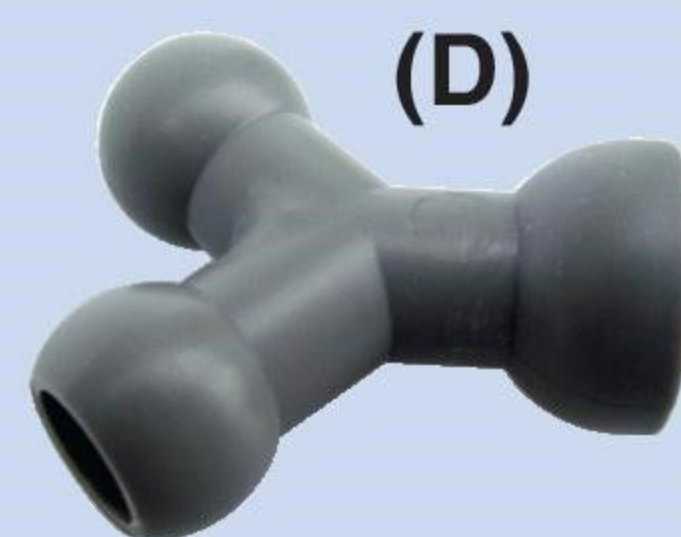
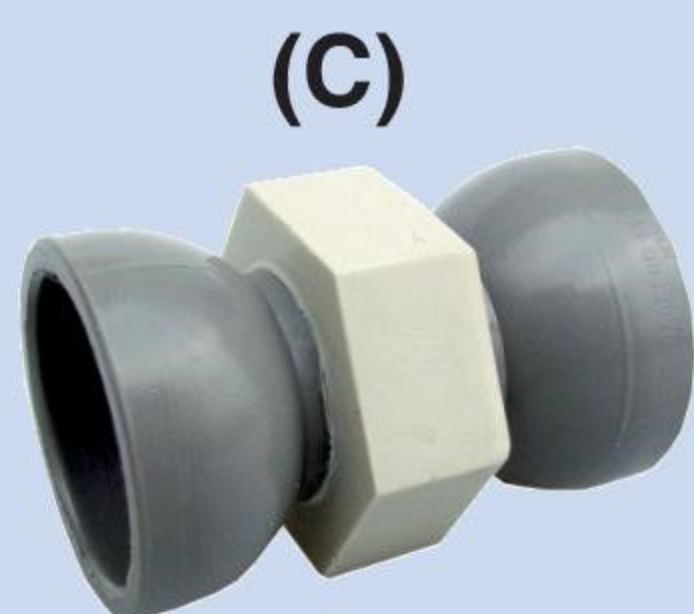
1/4"
System

1/2"
System

3/4" System

Adapters

Y-Fittings

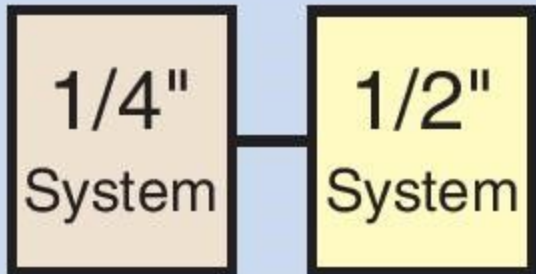


CAT. NO.	DESCRIPTION	FIG. CODE
	Hose to Hose Double Socket (Female)	(A)
8525-222A	Pac of 2	A

[illegible][illegible][illegible][illegible][illegible][illegible]

Standard Material: Delrin 500.
Polypropylene Available: Y Fittings, Consult Factory.
Standard Colors: Dark Gray standard (unless otherwise noted). NPT Connectors Light Gray, BSPT Connectors Dark Gray, Y Fittings Dark Gray.

Valves



Plastic Snap-Loc Valves



CAT. NO.	DESCRIPTION	CODE
8525-342	1/4" Male Snap-Loc x 1/4" Male NPT Black (1)	L
8525-334	1/4" Male Snap-Loc x 1/4" Male NPT Black (2)	L
8525-335	1/4" Male Snap-Loc x 1/4" Male NPT Black (10)	L
8525-343	1/4" Male Snap-Loc x 1/4" Male BSPT Dk Gray (1)	L
8525-338	1/4" Male Snap-Loc x 1/4" Male BSPT Dk Gray (2)	L
8525-339	1/4" Male Snap-Loc x 1/4" Male BSPT Dk Gray (10)	L
8550-398	1/2" Male Snap-Loc x 1/2" Male NPT Black (1)	L
8550-388	1/2" Male Snap-Loc x 1/2" Male NPT Black (2)	L
8550-389	1/2" Male Snap-Loc x 1/2" Male NPT Black (10)	L
8550-399	1/2" Male Snap-Loc x 1/2" Male BSPT Dk Gray (1)	L
8550-392	1/2" Male Snap-Loc x 1/2" Male BSPT Dk Gray (2)	L
8550-393	1/2" Male Snap-Loc x 1/2" Male BSPT Dk Gray (10)	L

CAT. NO.	DESCRIPTION	CODE
8525-344	1/4" Male Snap-Loc x 1/4" Female NPT Black (1)	L
8525-340	1/4" Male Snap-Loc x 1/4" Female NPT Black (2)	L
8525-341	1/4" Male Snap-Loc x 1/4" Female NPT Black (10)	L
8525-345	1/4" Male Snap-Loc x 1/4" Female BSPT Dk Gray (1)	L
8525-336	1/4" Male Snap-Loc x 1/4" Female BSPT Dk Gray (2)	L
8525-337	1/4" Male Snap-Loc x 1/4" Female BSPT Dk Gray (10)	L
8550-400	1/2" Male Snap-Loc x 1/2" Female NPT Black (1)	L
8550-394	1/2" Male Snap-Loc x 1/2" Female NPT Black (2)	L
8550-395	1/2" Male Snap-Loc x 1/2" Female NPT Black (10)	L
8550-401	1/2" Male Snap-Loc x 1/2" Female BSPT Dk Gray (1)	L
8550-390	1/2" Male Snap-Loc x 1/2" Female BSPT Dk Gray (2)	L
8550-391	1/2" Male Snap-Loc x 1/2" Female BSPT Dk Gray (10)	L

Plastic Threaded Valves



CAT. NO.	DESCRIPTION	CODE
8525-346	1/4" Male NPT x 1/4" Female NPT Black (1)	L
8525-347	1/4" Male NPT x 1/4" Female NPT Black (2)	L
8525-348	1/4" Male NPT x 1/4" Female NPT Black (10)	L
8525-349	1/4" Male BSPT x 1/4" Female BSPT Dk Gray (1)	L
8525-350	1/4" Male BSPT x 1/4" Female BSPT Dk Gray (2)	L
8525-351	1/4" Male BSPT x 1/4" Female BSPT Dk Gray (10)	L
8550-402	1/2" Male NPT x 1/2" Female NPT Black (1)	L
8550-403	1/2" Male NPT x 1/2" Female NPT Black (2)	L
8550-404	1/2" Male NPT x 1/2" Female NPT Black (10)	L
8550-405	1/2" Male BSPT x 1/2" Female BSPT Dk Gray (1)	L
8550-406	1/2" Male BSPT x 1/2" Female BSPT Dk Gray (2)	L
8550-407	1/2" Male BSPT x 1/2" Female BSPT Dk Gray (10)	L

CAT. NO.	DESCRIPTION	CODE
8525-352	1/4" Female NPT x 1/4" Female NPT Black (1)	L
8525-353	1/4" Female NPT x 1/4" Female NPT Black (2)	L
8525-354	1/4" Female NPT x 1/4" Female NPT Black (10)	L
8525-355	1/4" Female BSPT x 1/4" Female BSPT Dk Gray (1)	L
8525-356	1/4" Female BSPT x 1/4" Female BSPT Dk Gray (2)	L
8525-357	1/4" Female BSPT x 1/4" Female BSPT Dk Gray (10)	L
8550-408	1/2" Female NPT x 1/2" Female NPT Black (1)	L
8550-409	1/2" Female NPT x 1/2" Female NPT Black (2)	L
8550-410	1/2" Female NPT x 1/2" Female NPT Black (10)	L
8550-411	1/2" Female BSPT x 1/2" Female BSPT Dk Gray (1)	L
8550-412	1/2" Female BSPT x 1/2" Female BSPT Dk Gray (2)	L
8550-413	1/2" Female BSPT x 1/2" Female BSPT Dk Gray (10)	L

Standard Material: Delrin 500.
Other Valves Available: Consult Factory.
Standard Colors: 1/4": NPT Black, BSPT Dk Gray
1/2": NPT Dk Gray, BSPT Dk Gray



Assembly & Separation Tools



CAT. NO.	DESCRIPTION	CODE
8701-030	1/4" Separation Wedge	

- BENEFITS:**
- Simple tool slips easily over hose components for quick separation of parts
 - Works well in awkward positions or on machines



- BENEFITS:**
- Get a tight grip on snap-fit
 - Great for special assemblies
 - Tool makes it easier to get leverage for assembly
 - Eliminates frustration of assembly with oily hands or in awkward positions on machines
 - Compatible with most "Brand X" hoses

- FEATURES:**
- Simple to install and easy to use
 - Assembles up to 12" hose lengths
 - Purchase additional rods to assemble all sizes
 - Assembles hose segments, as well as round nozzles and connectors of same size

Magna-Flow

Efficient Flow Control To Deliver Air / Liquid Coolant Where It Is Needed



- FEATURES:**
- Control valve allows convenient adjustment of air / coolant near work
 - Barbed connection easily adapts to regulated shop air or machine coolant pump
 - Magnetic Base (38 Lb. Pull) holds unit firmly in position
 - Made of high quality non-corrosive materials
 - Flexible hose can be easily directed and stays in position
- BENEFITS:**
- Extends tool life with precise coolant delivery
 - Clears chips from work piece for easier visual inspection
 - Great for EDM flushing
 - Eliminates awkward support & adjustment
 - Quickly transfers to other machines



Replacement Parts

- APPLICATION NOTE:**
- It is easy to adapt units for more nozzle outlets. Extra hose, Y-fittings, and nozzles may be purchased separately.

E-Z Mist

Reliable Mist Flow With Precision Control

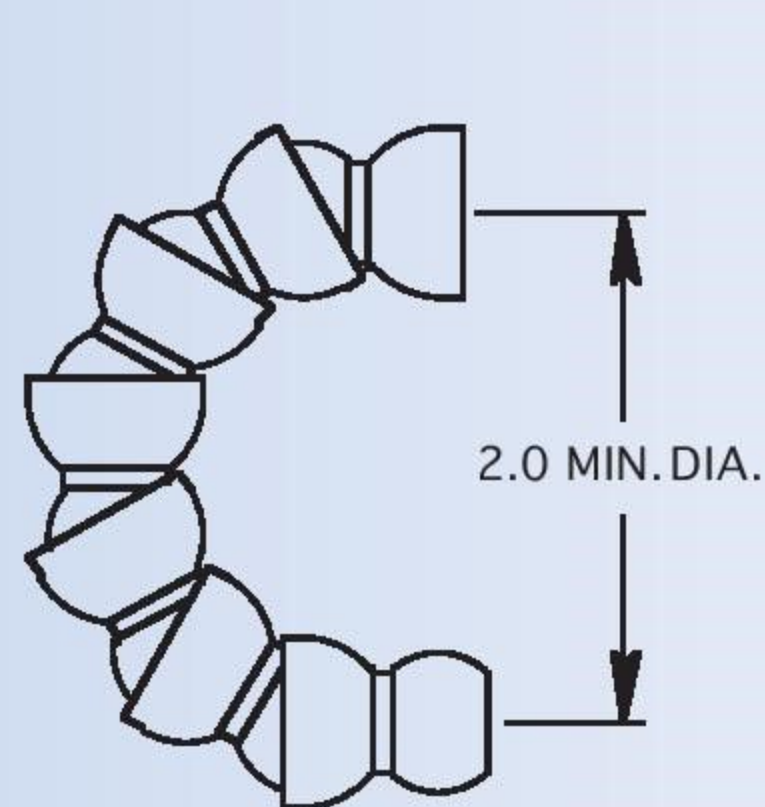


- FEATURES:**
- Get the right mist mixture with separate air and fluid controls
 - Fully assembled, ready to use
 - No special tank required
 - Magnetic base can be easily repositioned
 - Made of high quality non-corrosive materials
- BENEFITS:**
- Extend tool life with optimal heat dissipation
 - Allows correct mist mixture for any job
 - Chemical savings
 - Flexible hose stays in position to direct mist flow with ease
 - Maintenance minimized by in-line coolant filter

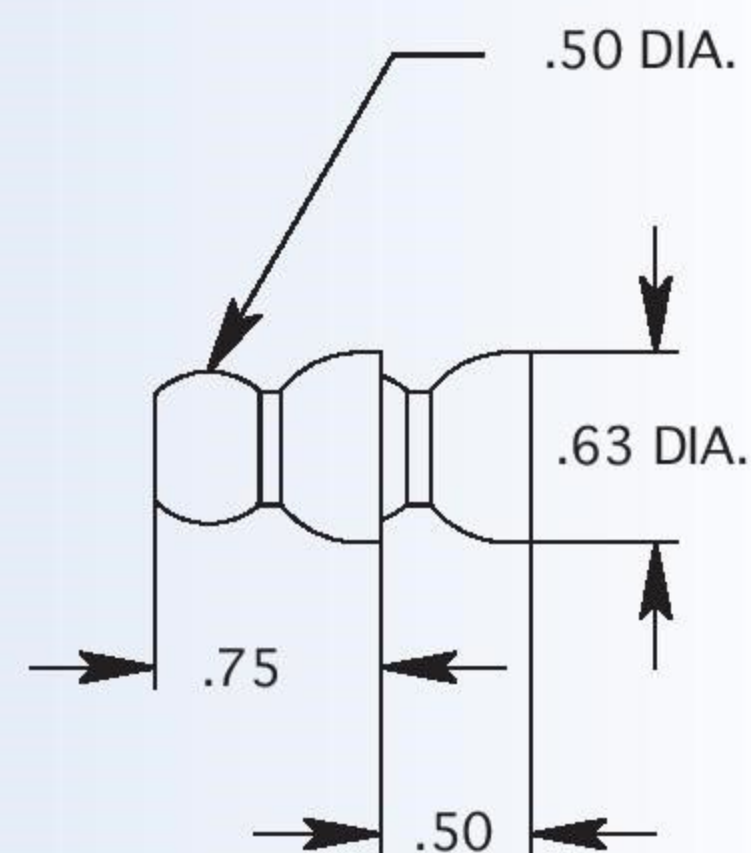
CAT. NO.	DESCRIPTION	CODE
6460-001	Aspirator Assembly With Strainer	II
8702-043	Mag Base Assembly	II
8525-346	1/4" MPT x FPT Valve	L
6420-001	Regulator	II
6480-001	1" Diameter Pressure Gauge	II
6530-001	Strainer Assembl	

- APPLICATION NOTES:**
- E-Z Mist Precision Control Kit utilizes a built in regulator so shop air can be directly applied. Maintain close pressure tolerances for maximum misting efficiency and maximum cost savings

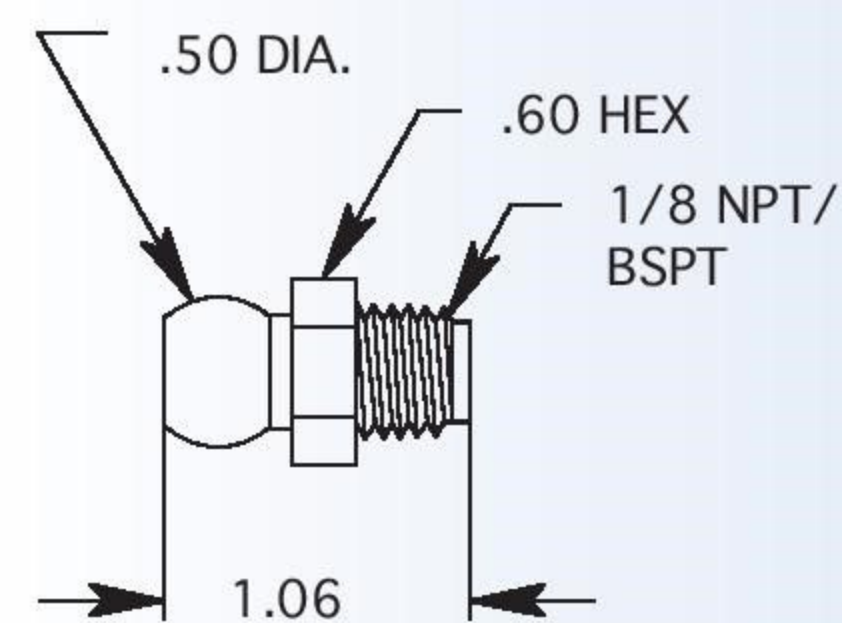
1/4" Snap-Loc Dimensions (Inches)



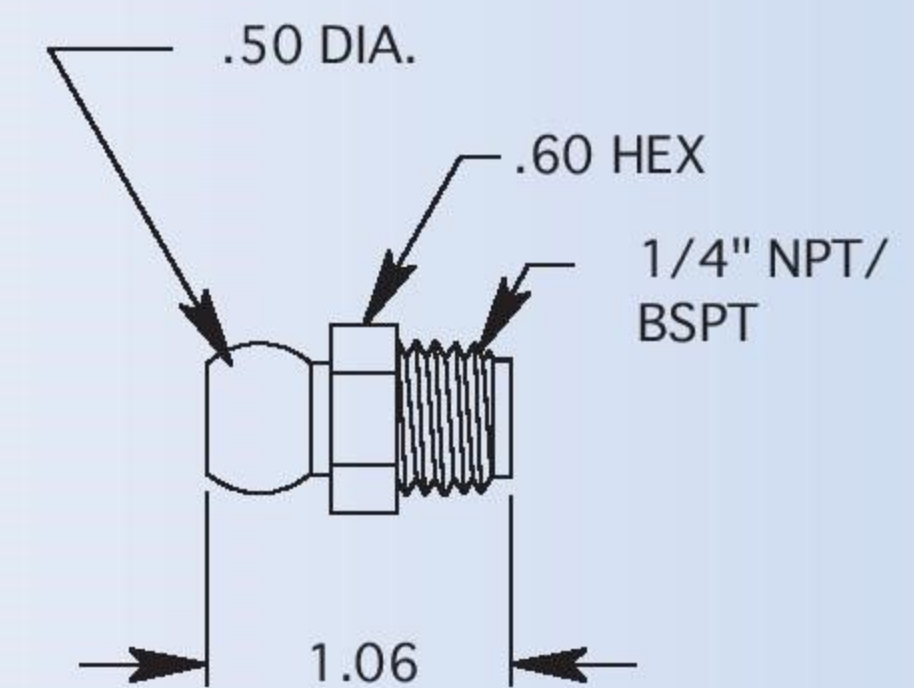
1/4" HOSE



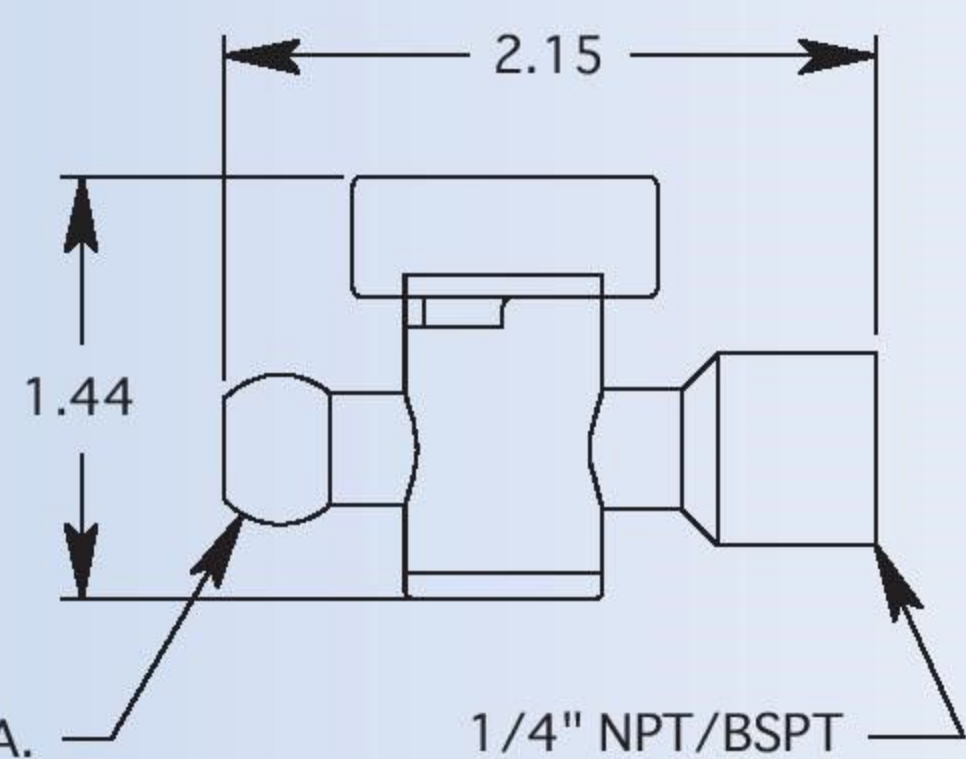
1/4" BODY SEGMENTS



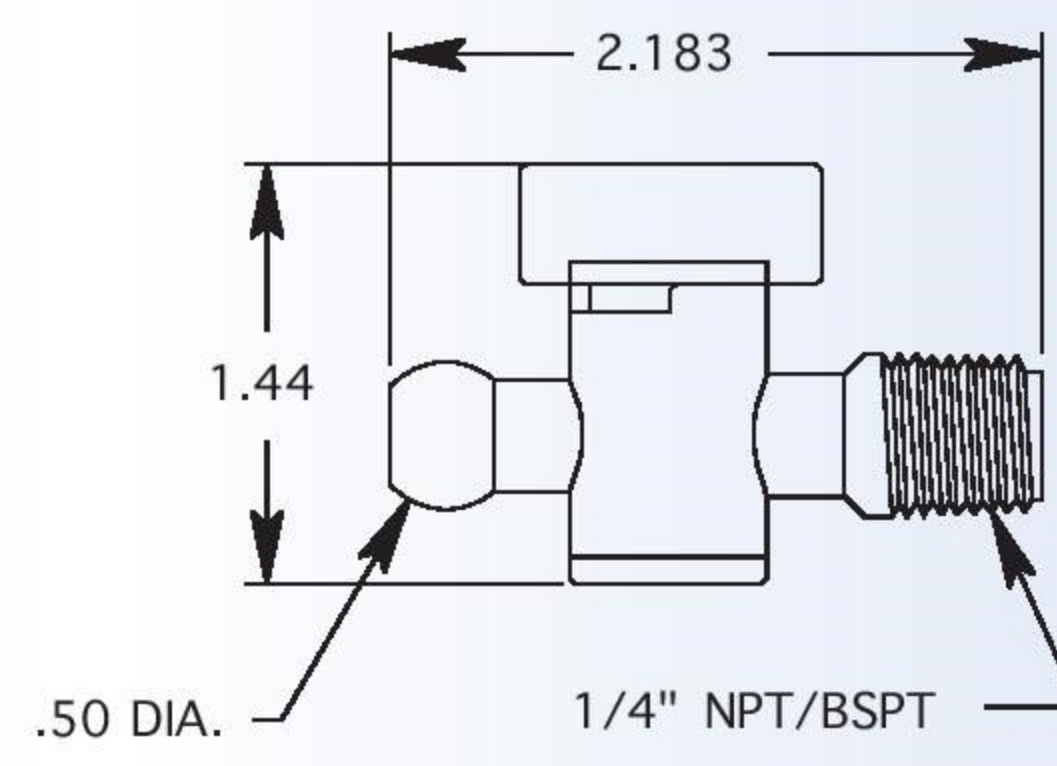
1/8" MALE CONNECTOR



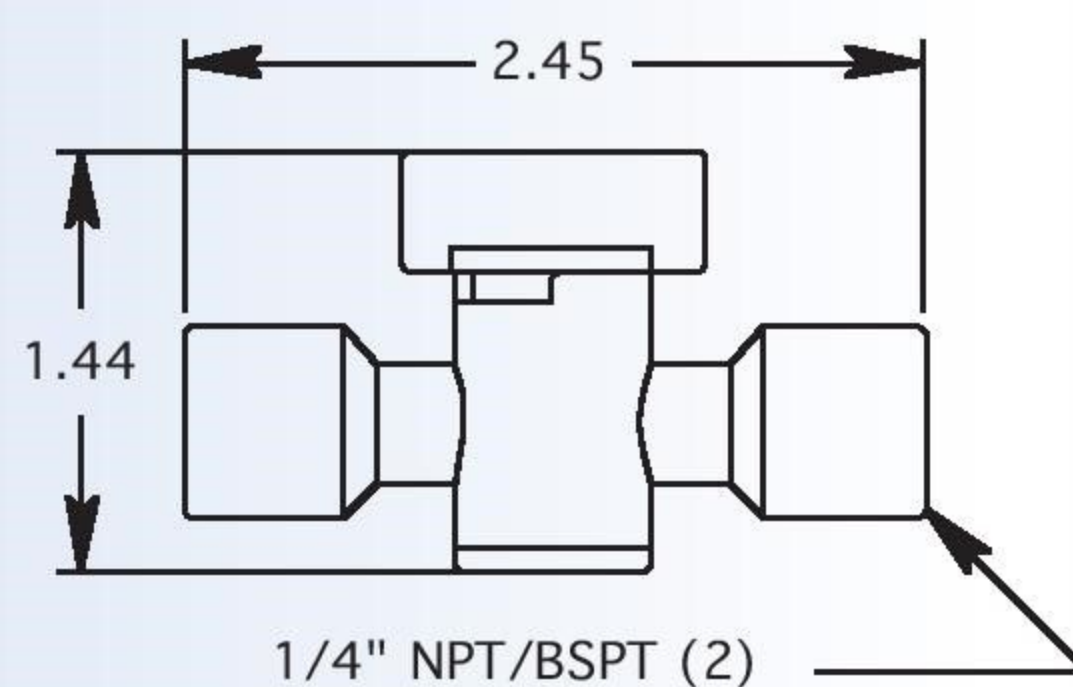
1/4" MALE CONNECTOR



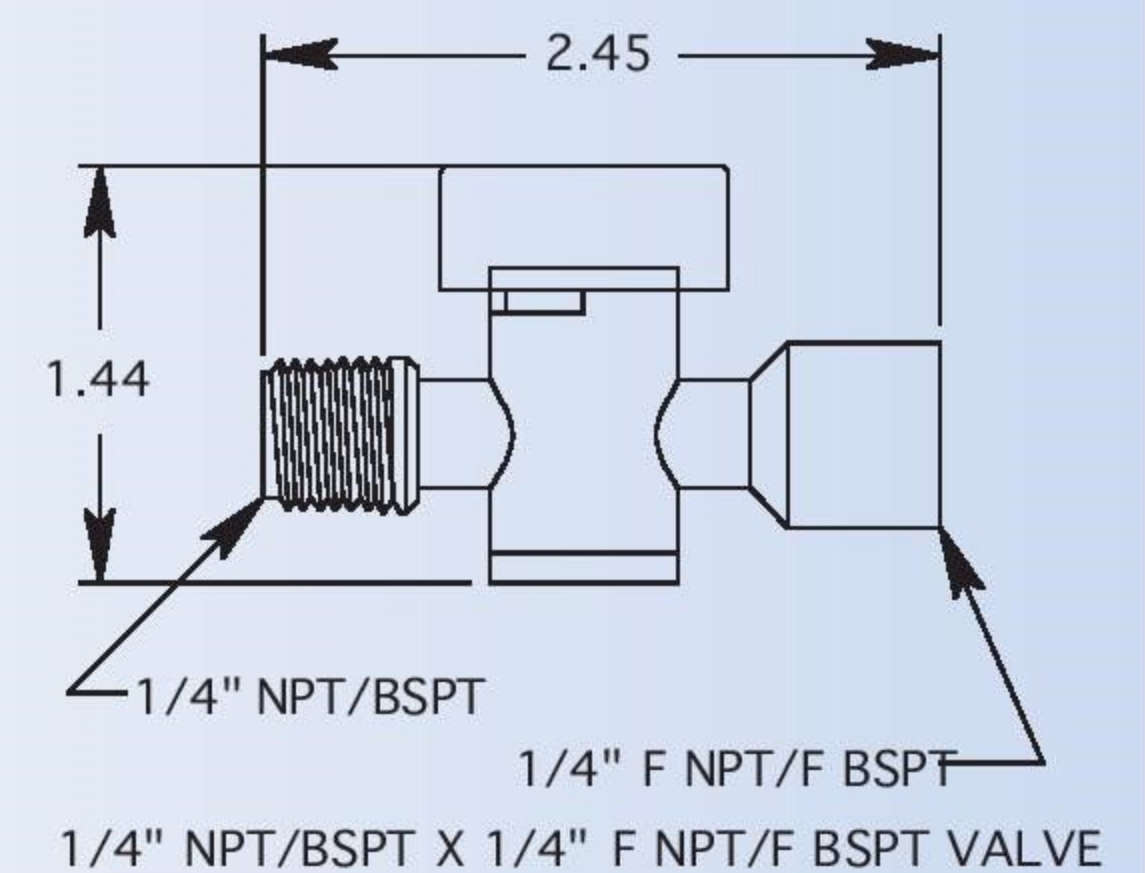
1/4" HOSE X 1/4" F NPT/F BSPT VALVE



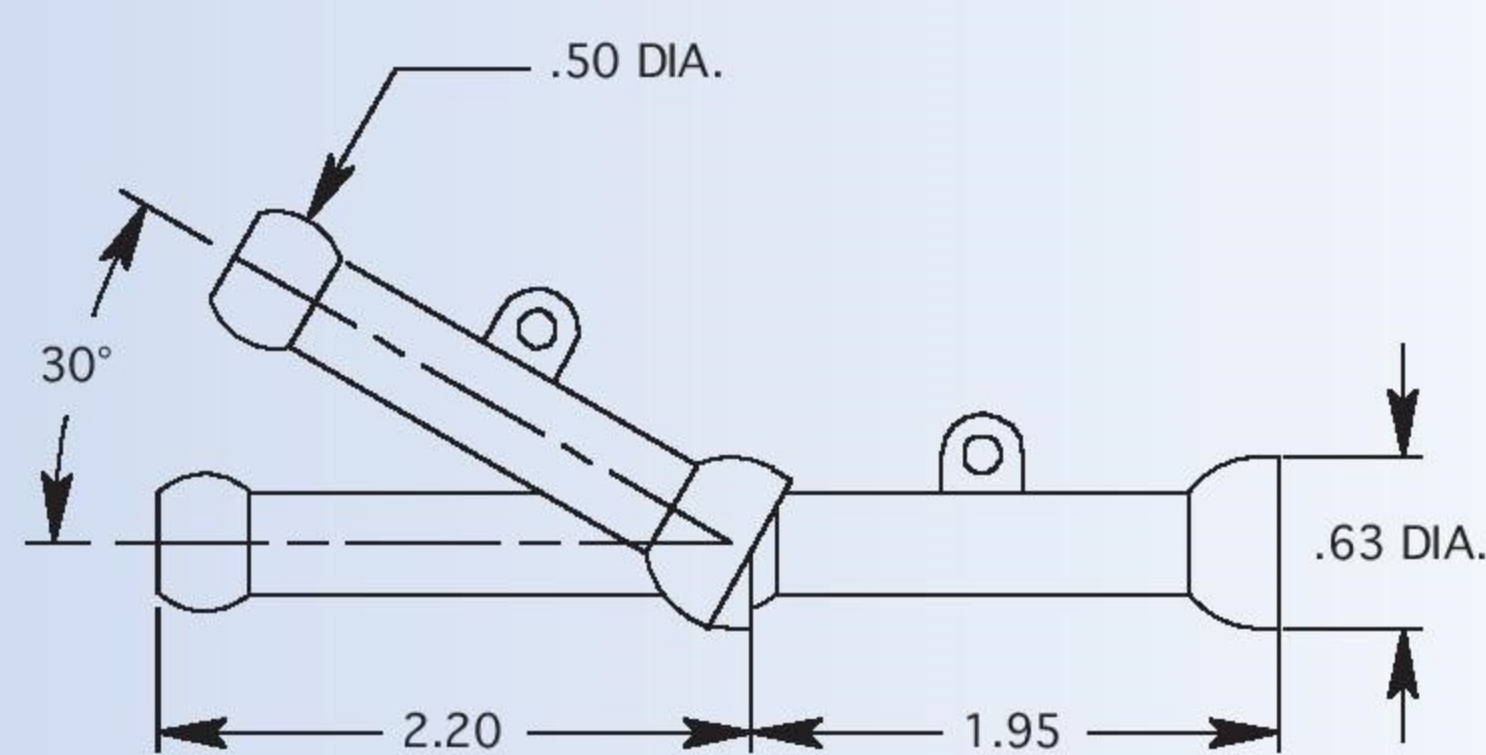
1/4" HOSE X 1/4" NPT/BSPT VALVE



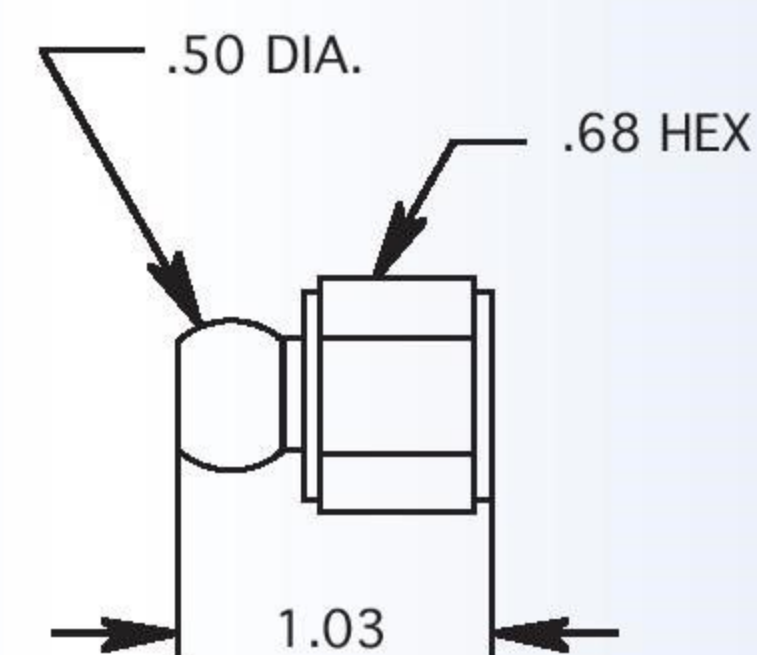
1/4" NPT/BSPT (2)
1/4" F NPT/BSPT X 1/4" F NPT/BSPT VALVE



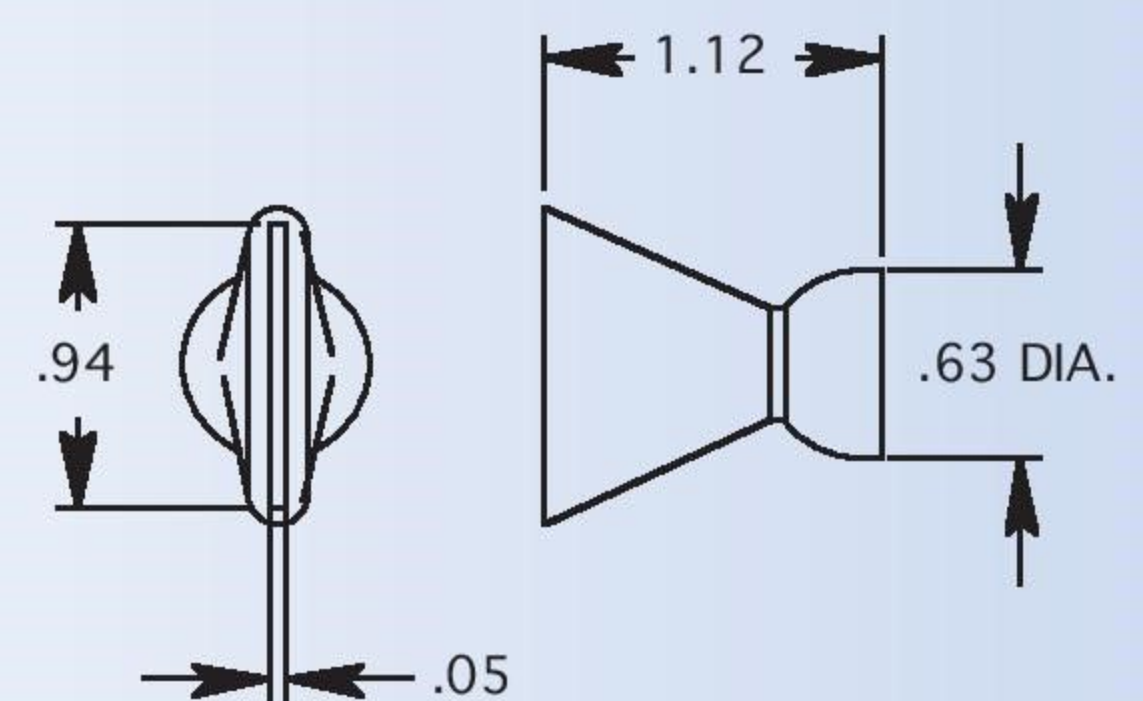
1/4" NPT/BSPT X 1/4" F NPT/F BSPT VALVE



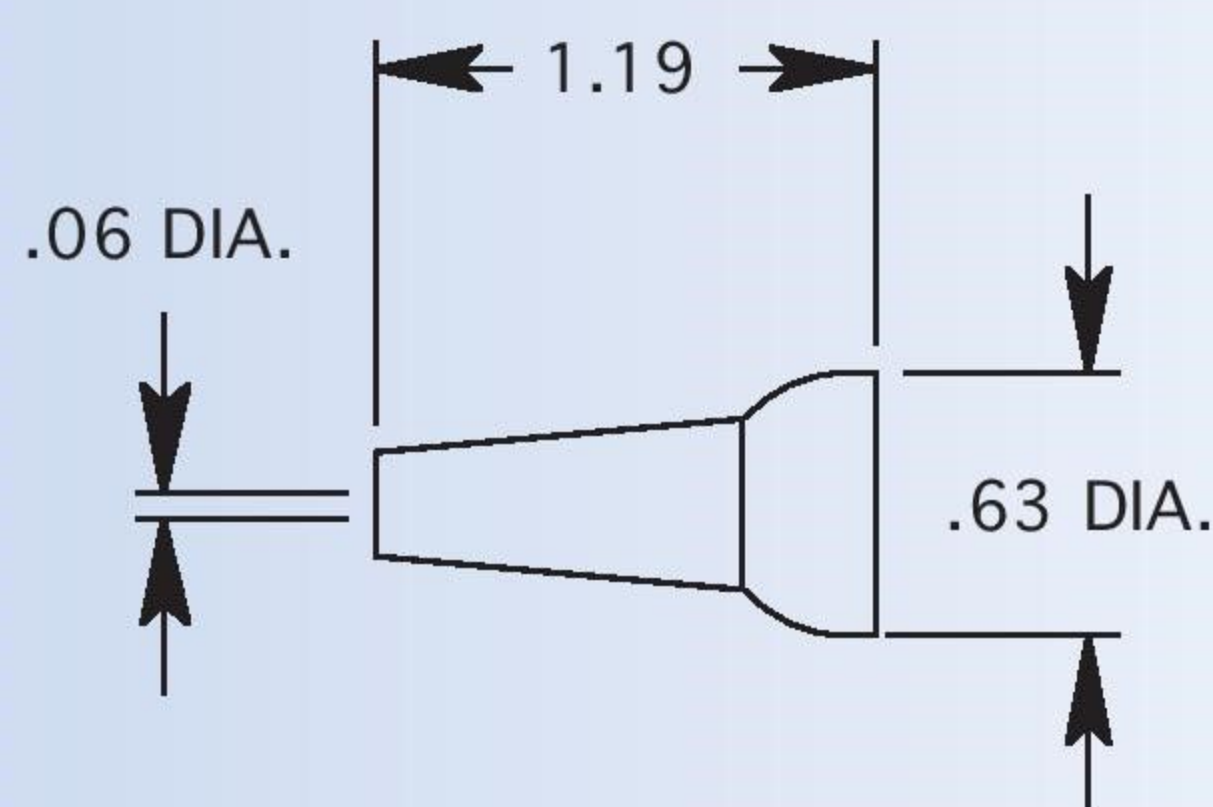
1/4" EXTENSION SEGMENTS



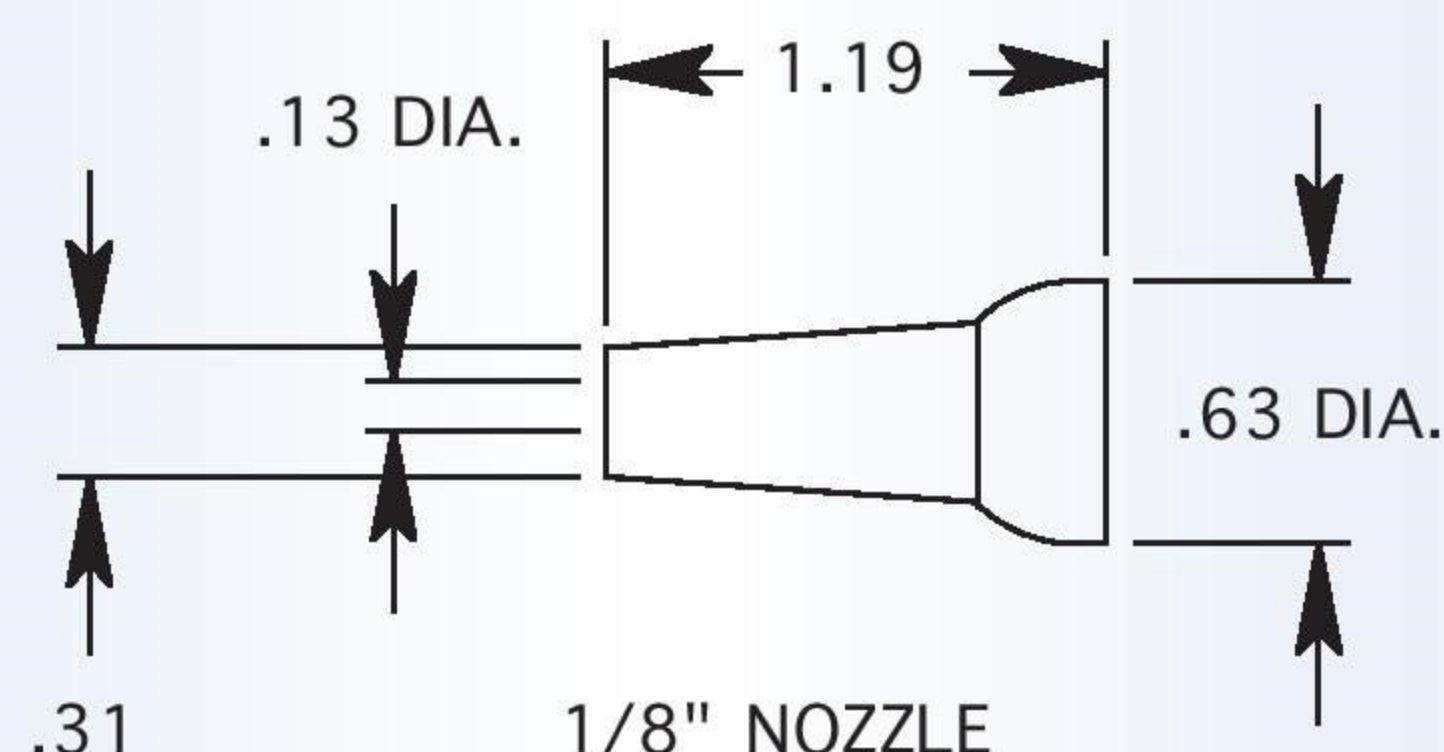
1/8" FPT FEMALE CONNECTOR
1/4" FPT FEMALE CONNECTOR



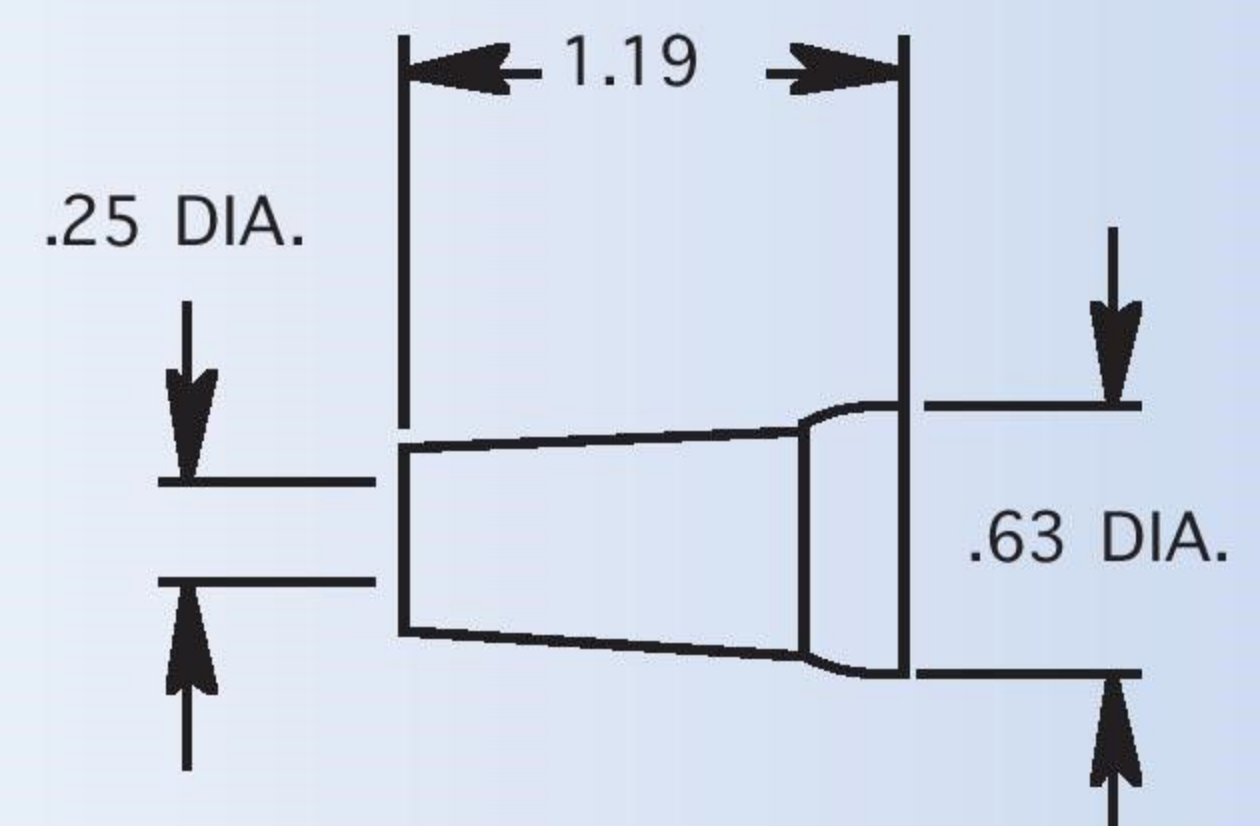
1" FLARE NOZZLE



1/16" NOZZLE



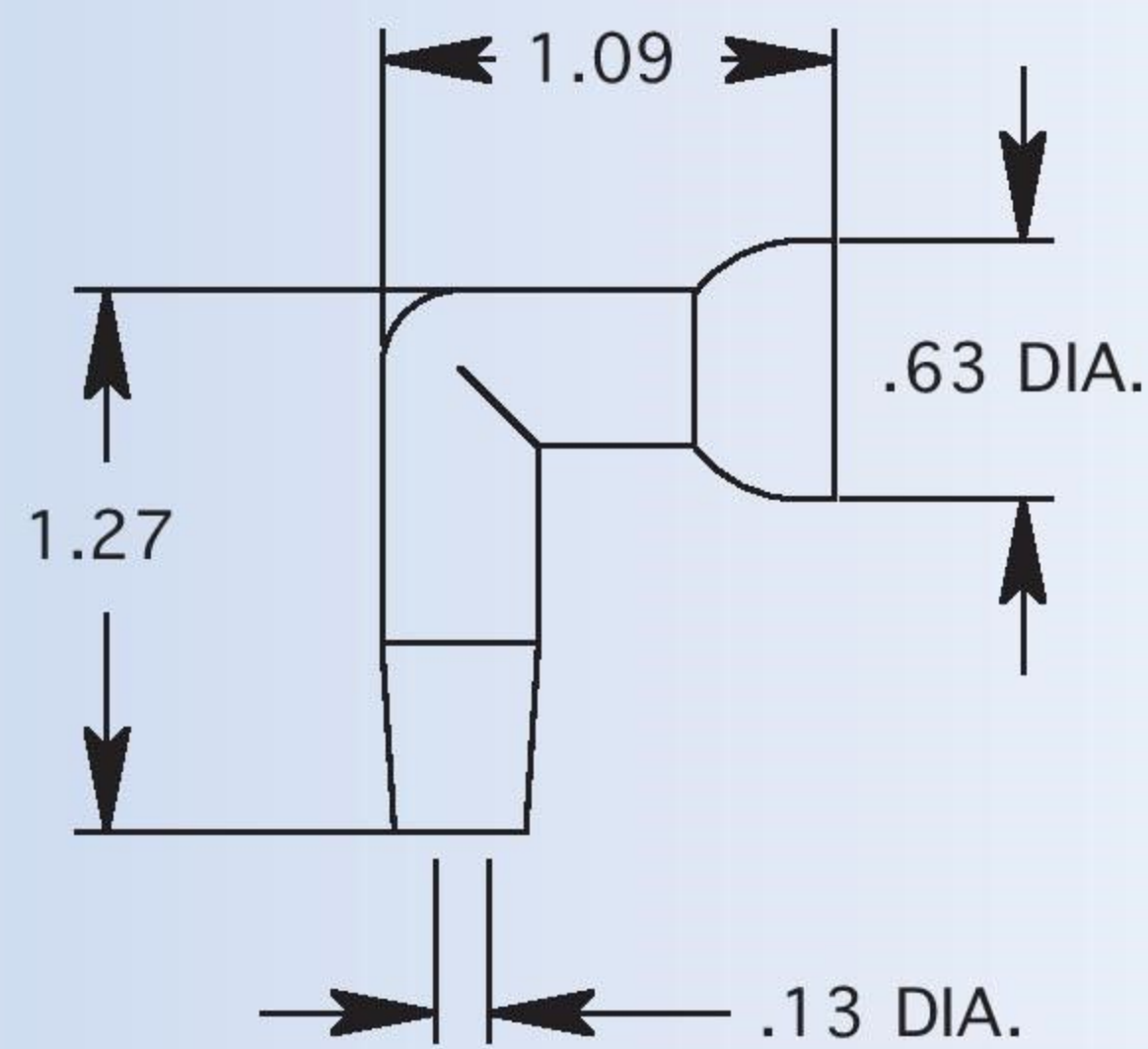
1/8" NOZZLE



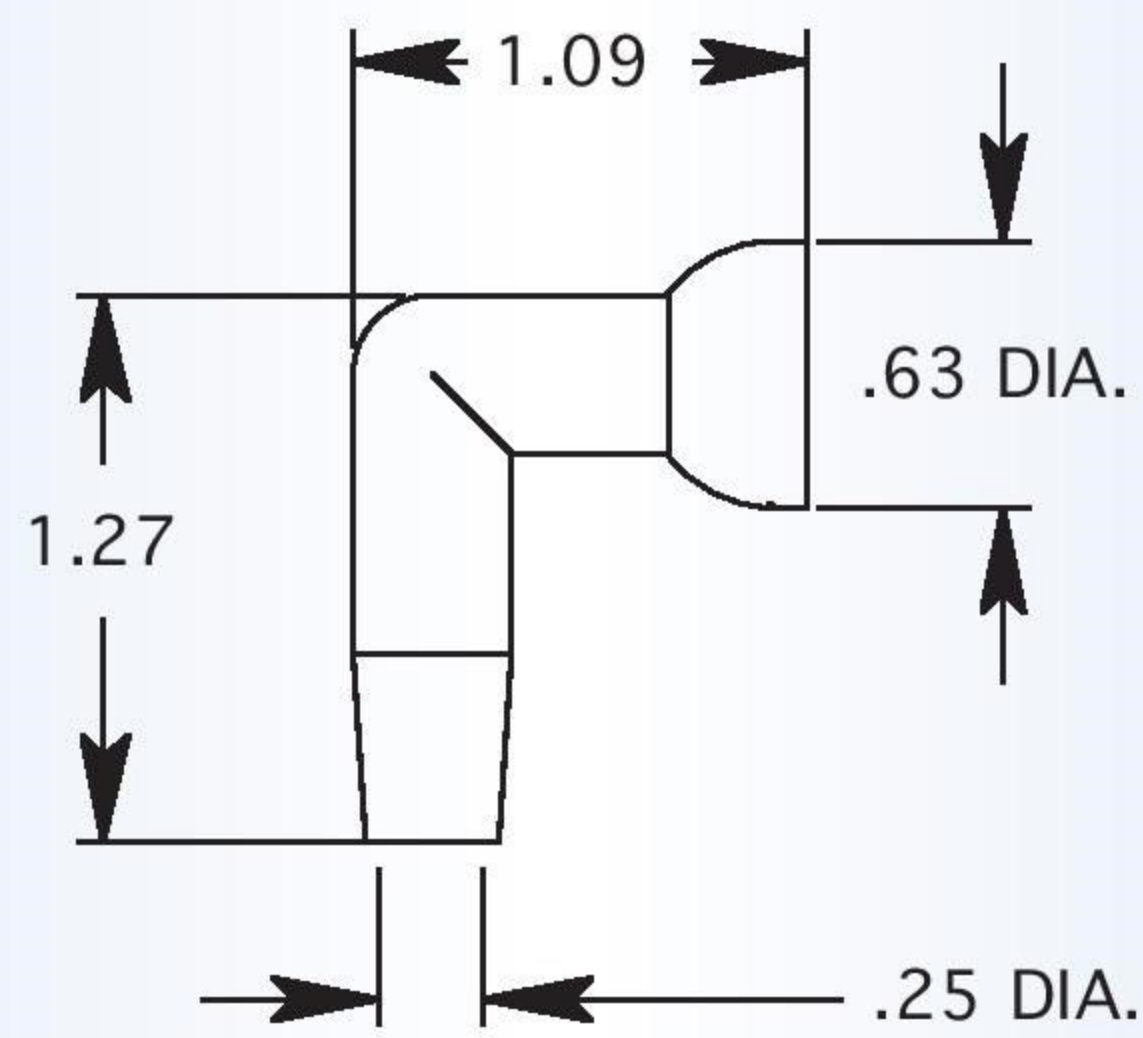
1/4" NOZZLE

Technical & Dimensional Data

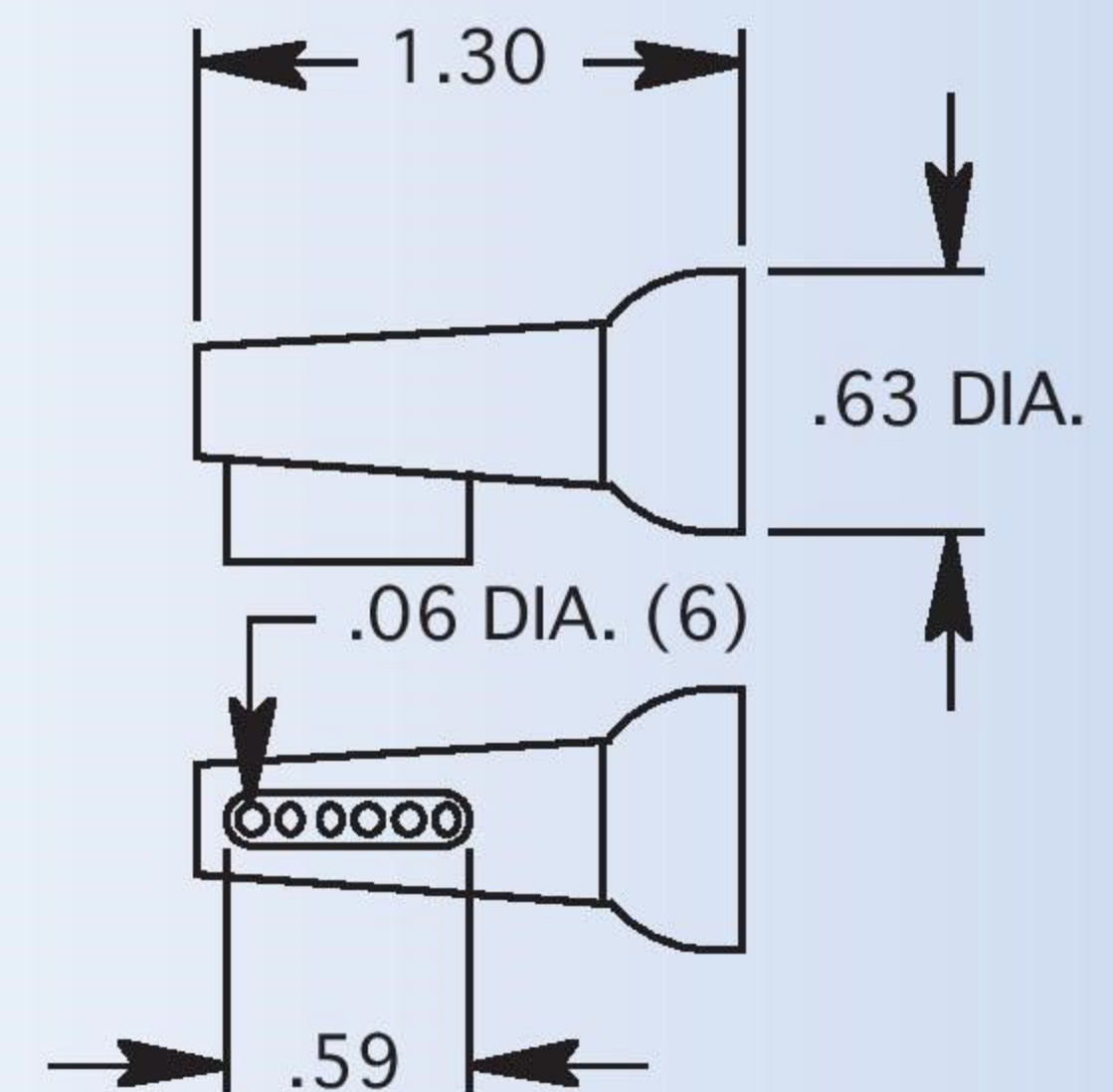
1/4" Snap-Loc Dimensions (Inches)



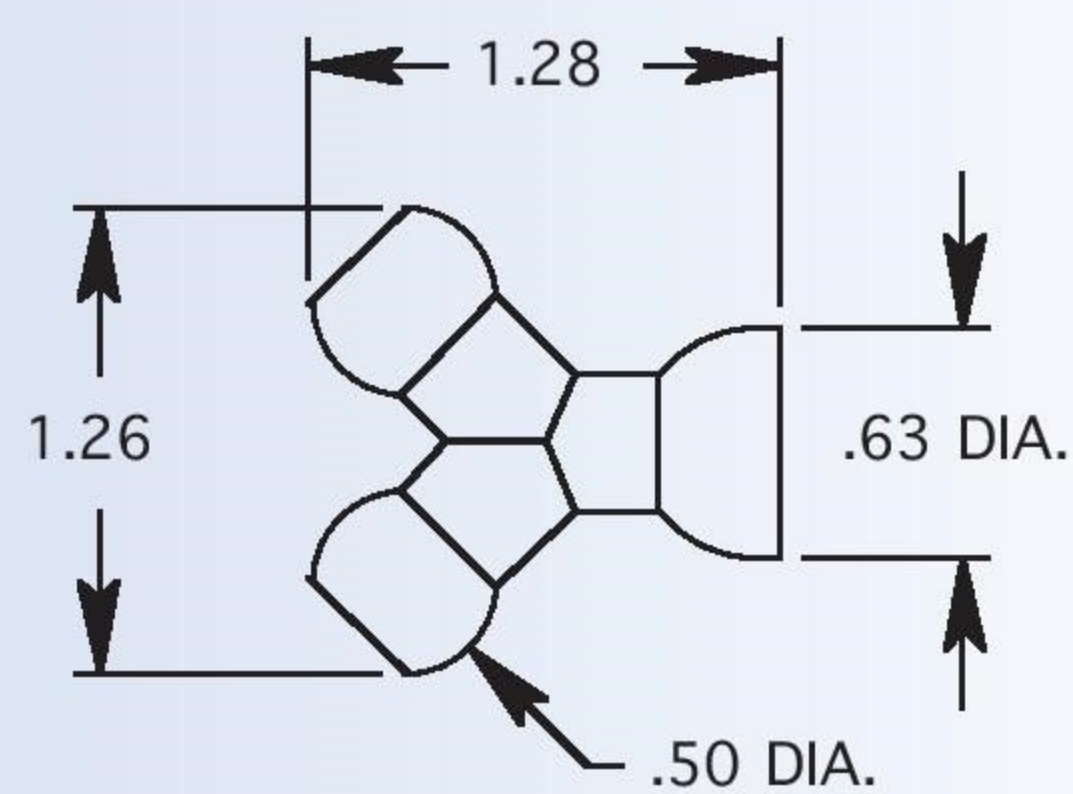
1/8" 90 DEGREE NOZZLE



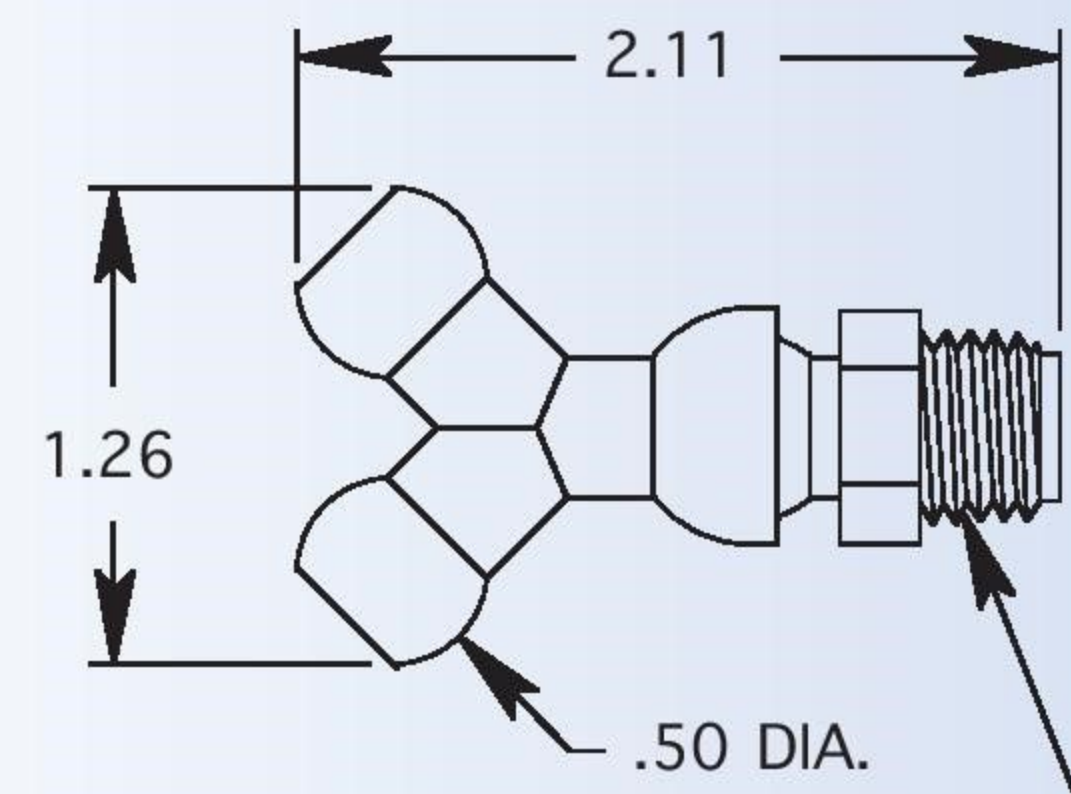
1/4" 90 DEGREE NOZZLE



1/4" SIDE-SPRAY NOZZLE

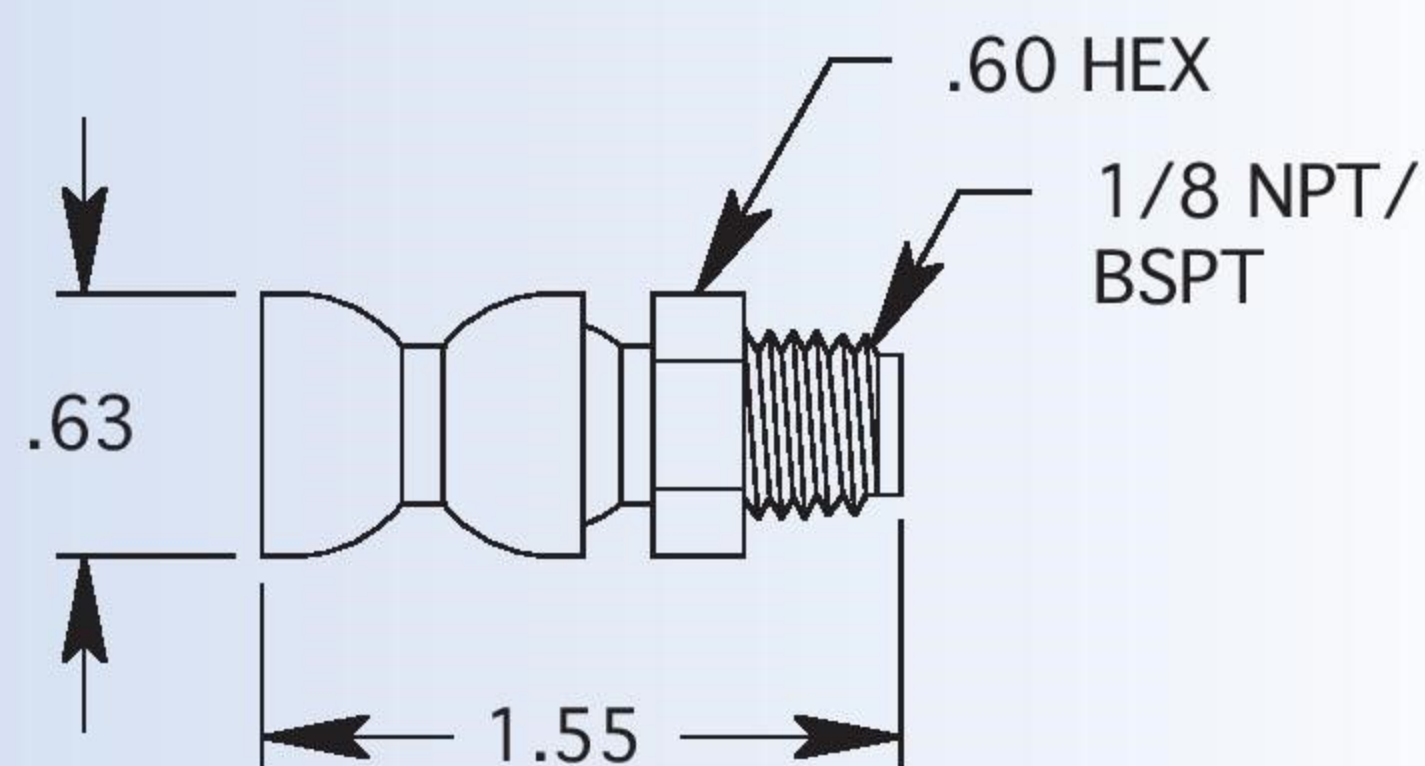


1/4" Y

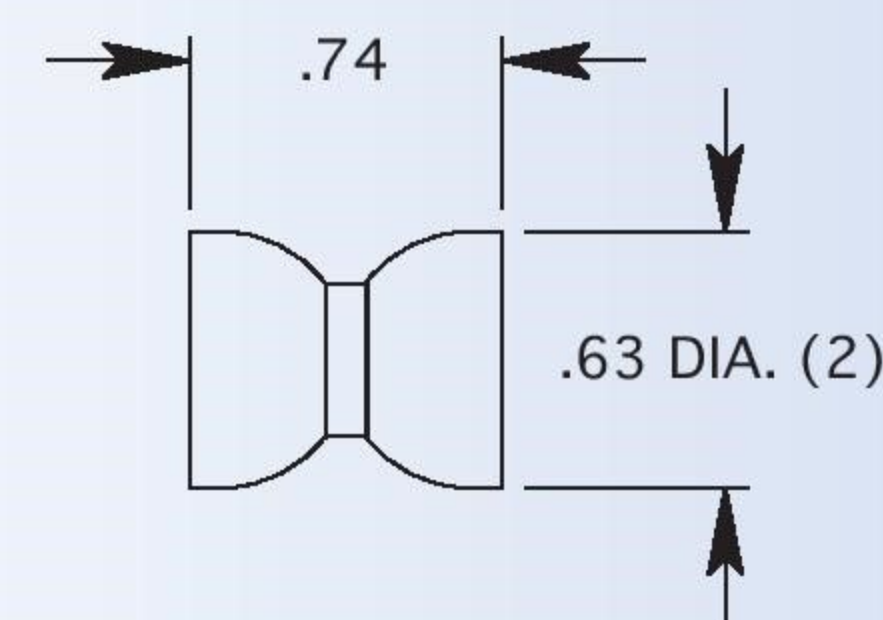


1/4" NPT/BSPT

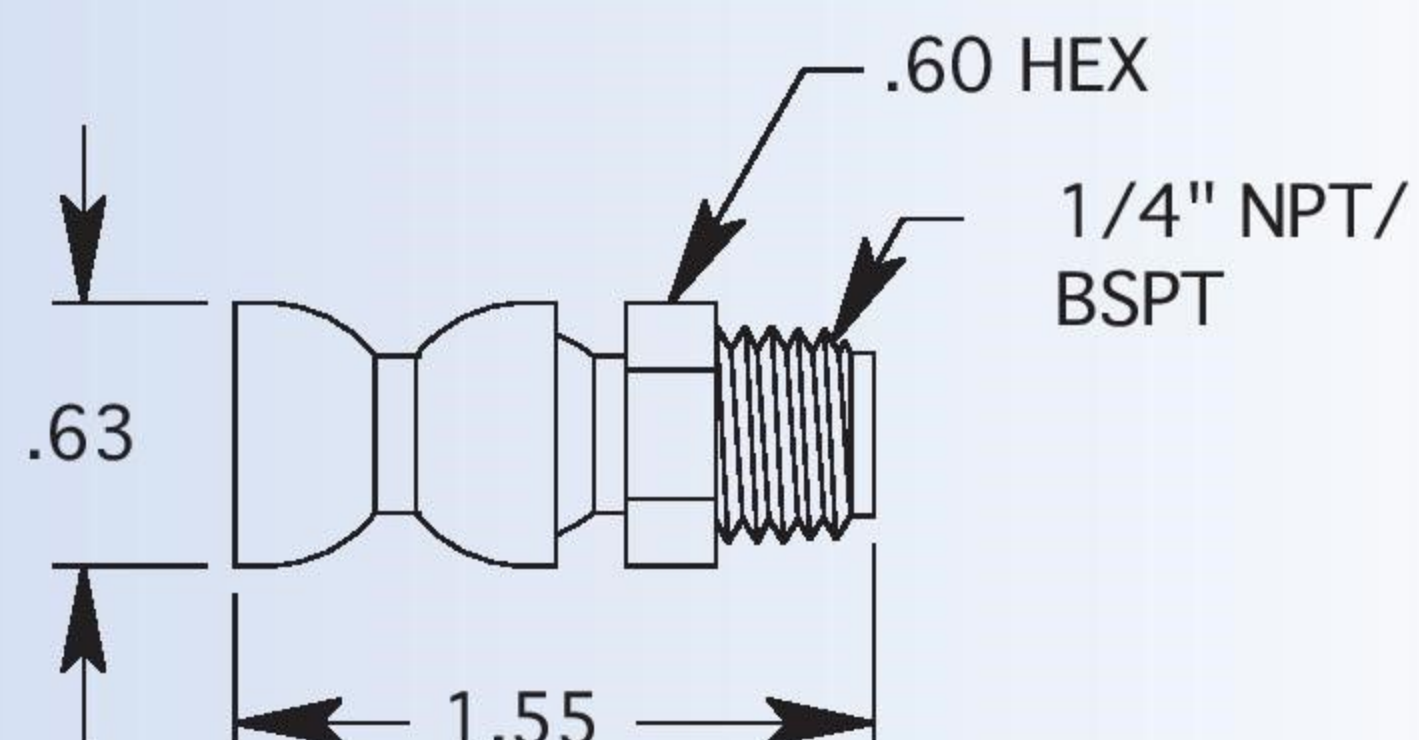
1/4" Y X 1/8" & 1/4" CONNECTOR MOLDED



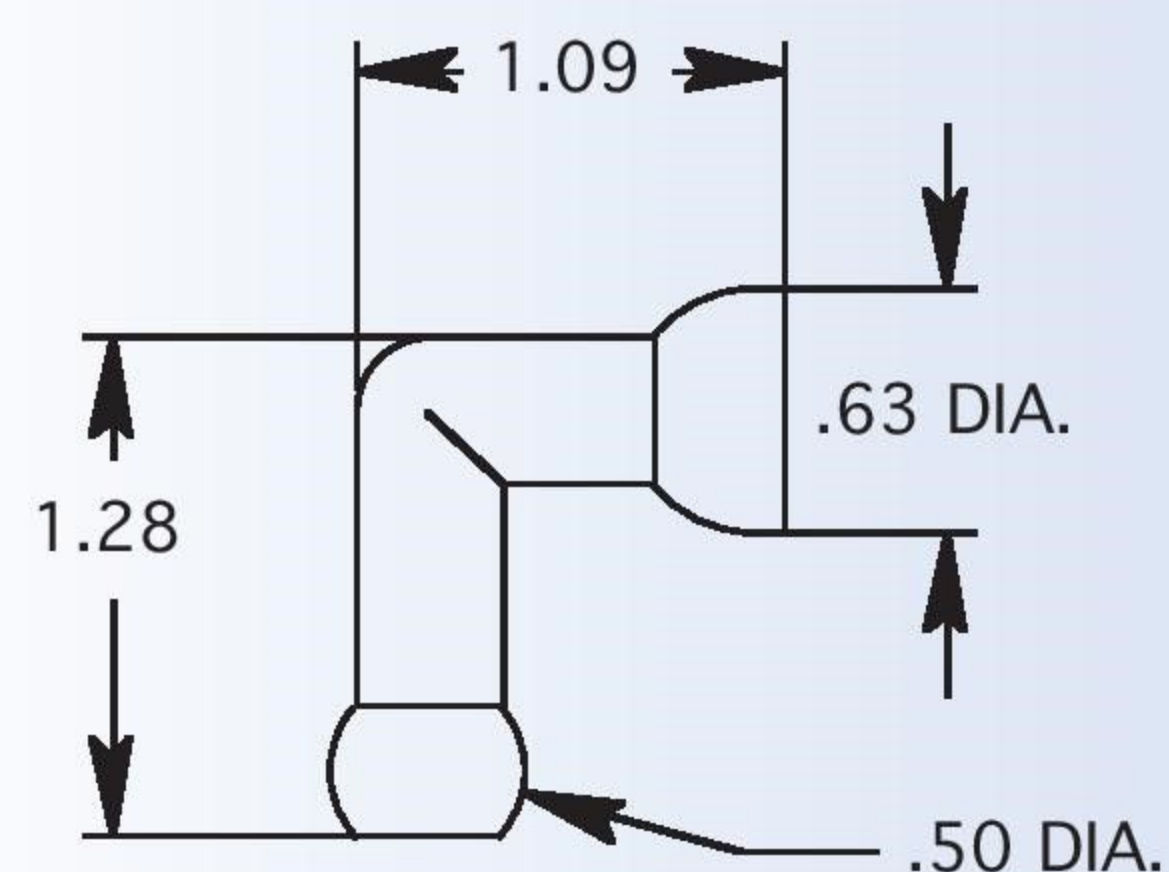
1/4" F HOSE X 1/8" CONNECTOR



1/4" DOUBLE SOCKET ADAPTER

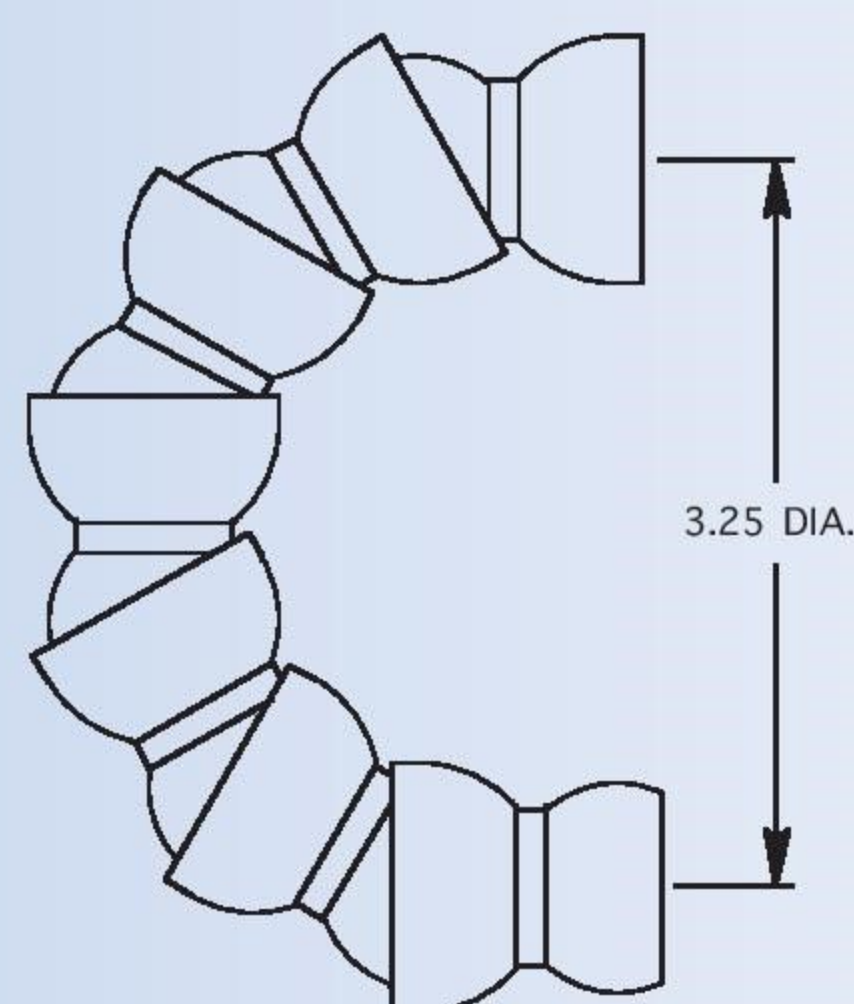


1/4" F HOSE X 1/4" CONNECTOR

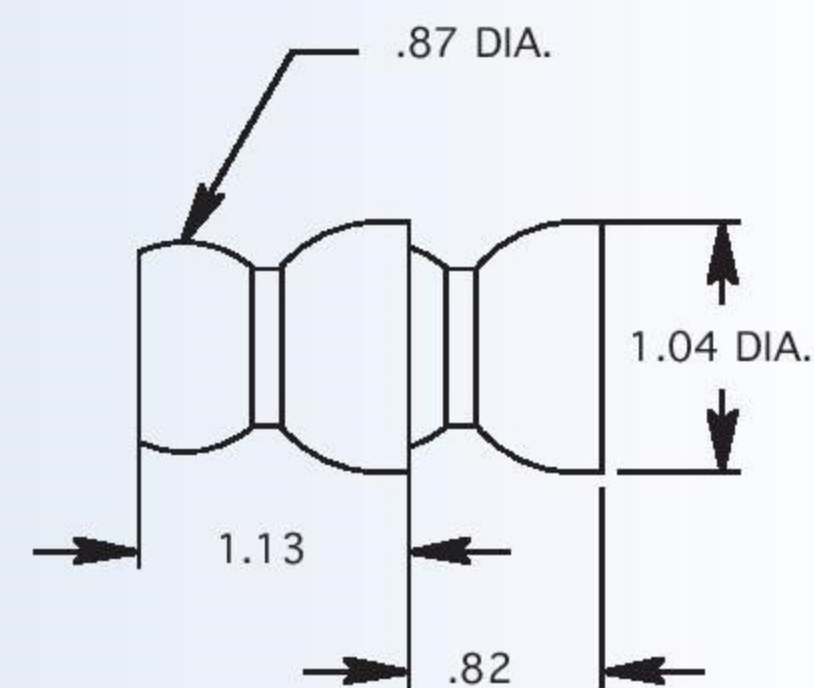


1/4" 90 DEGREE ELBOW

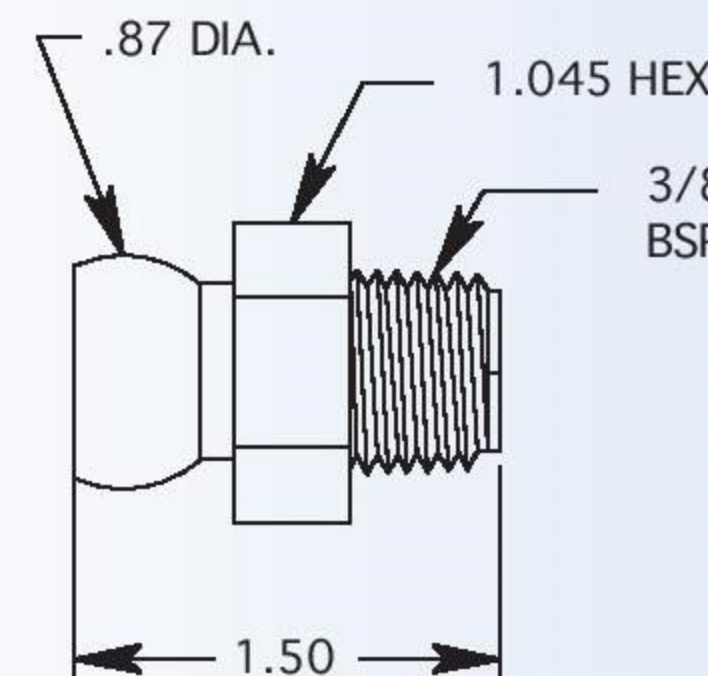
1/2" Snap-Loc Dimensions (Inches)



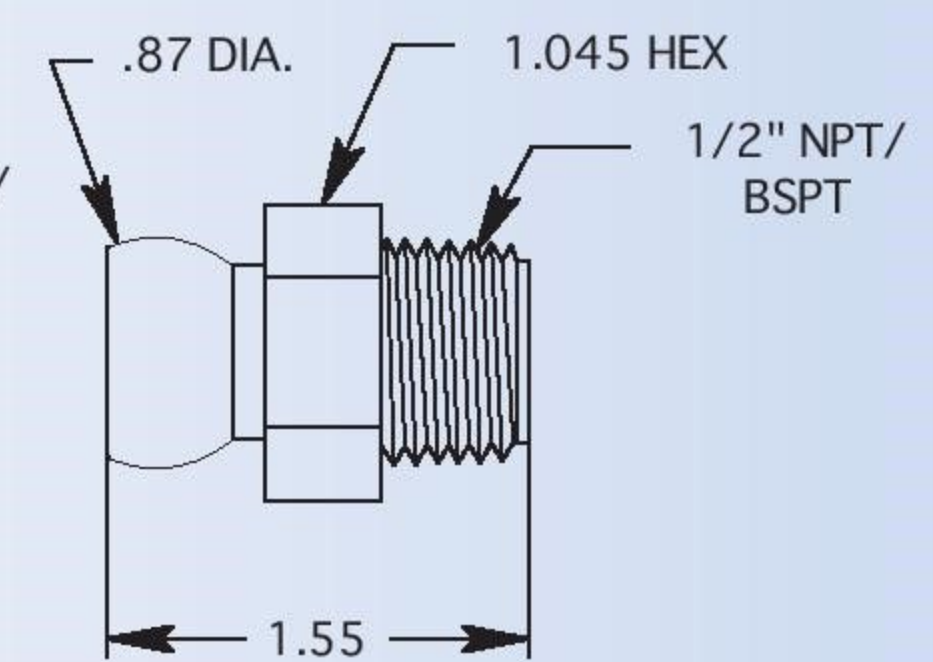
1/2" HOSE



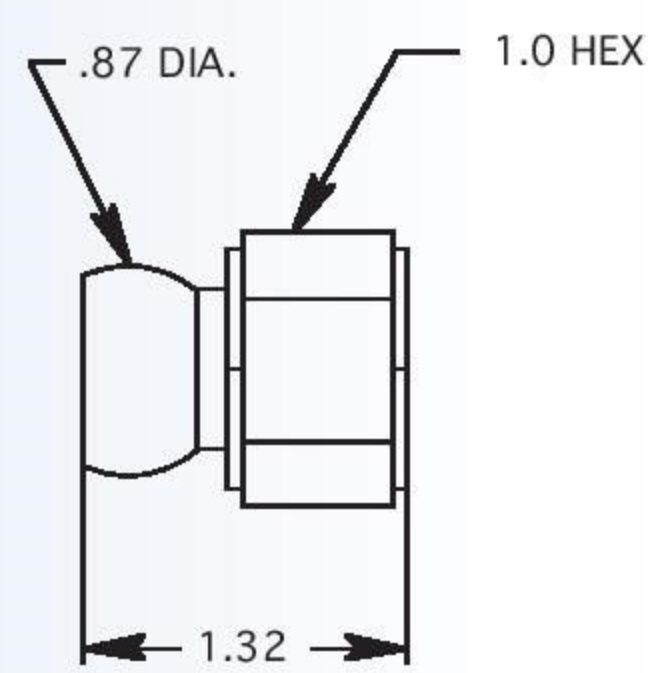
1/2" BODY SEGMENTS



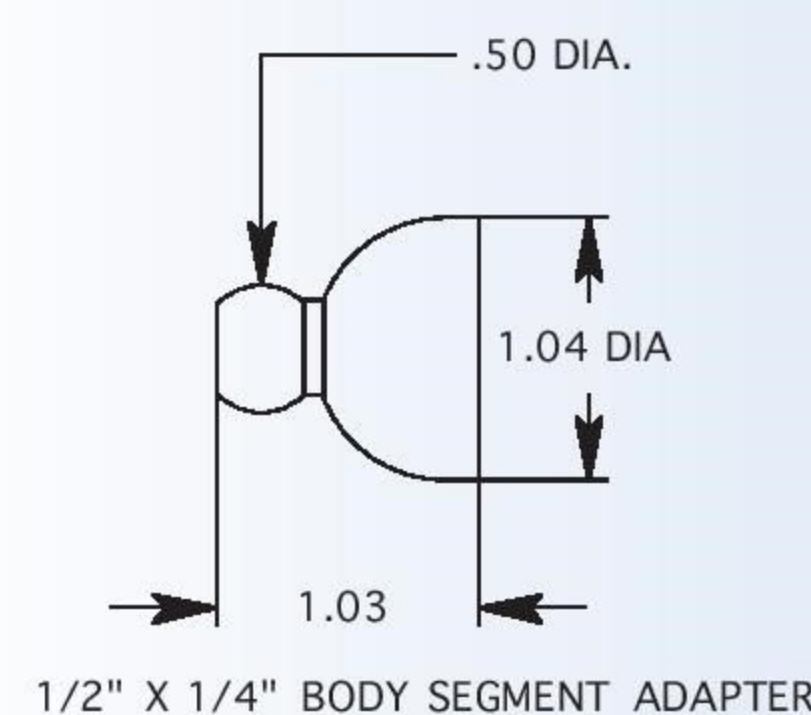
3/8" MALE CONNECTOR



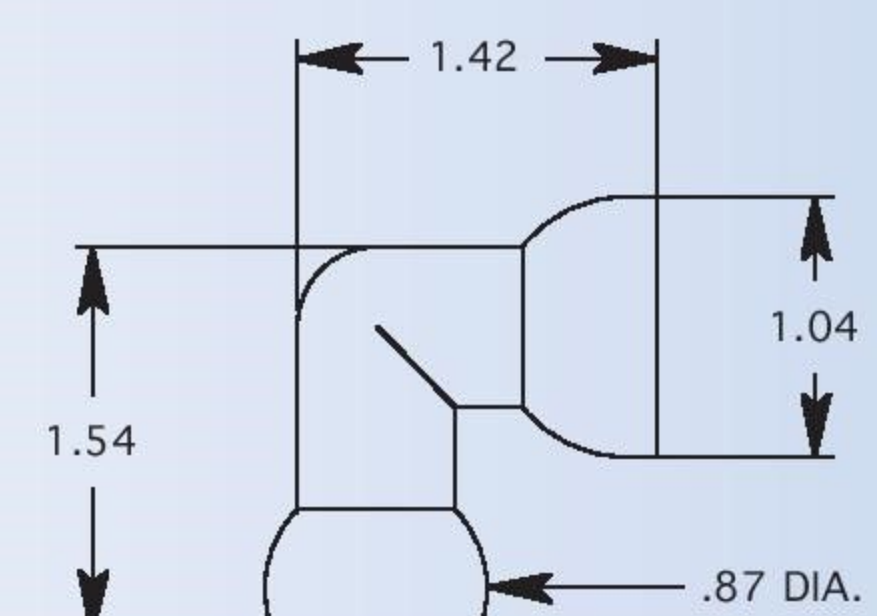
1/2" MALE CONNECTOR



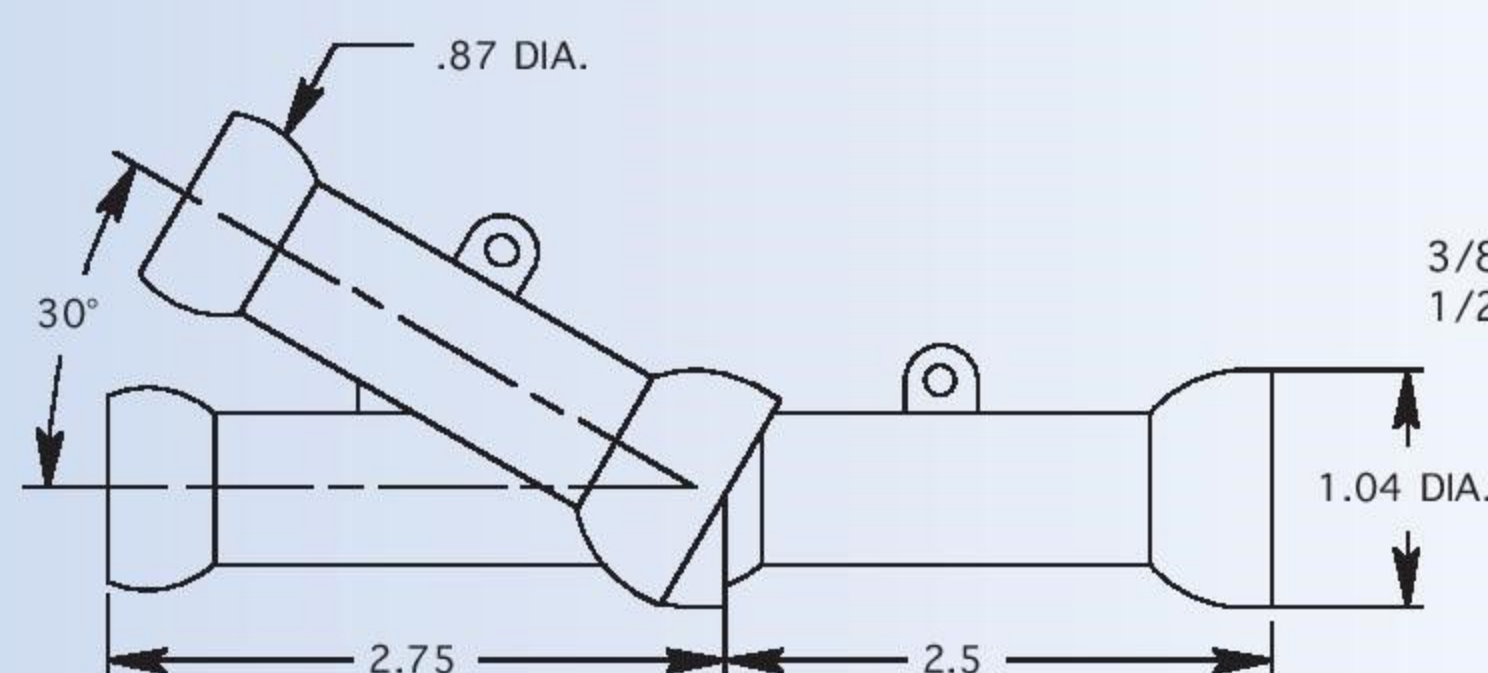
3/8" FPT FEMALE CONNECTOR
1/2" FPT FEMALE CONNECTOR



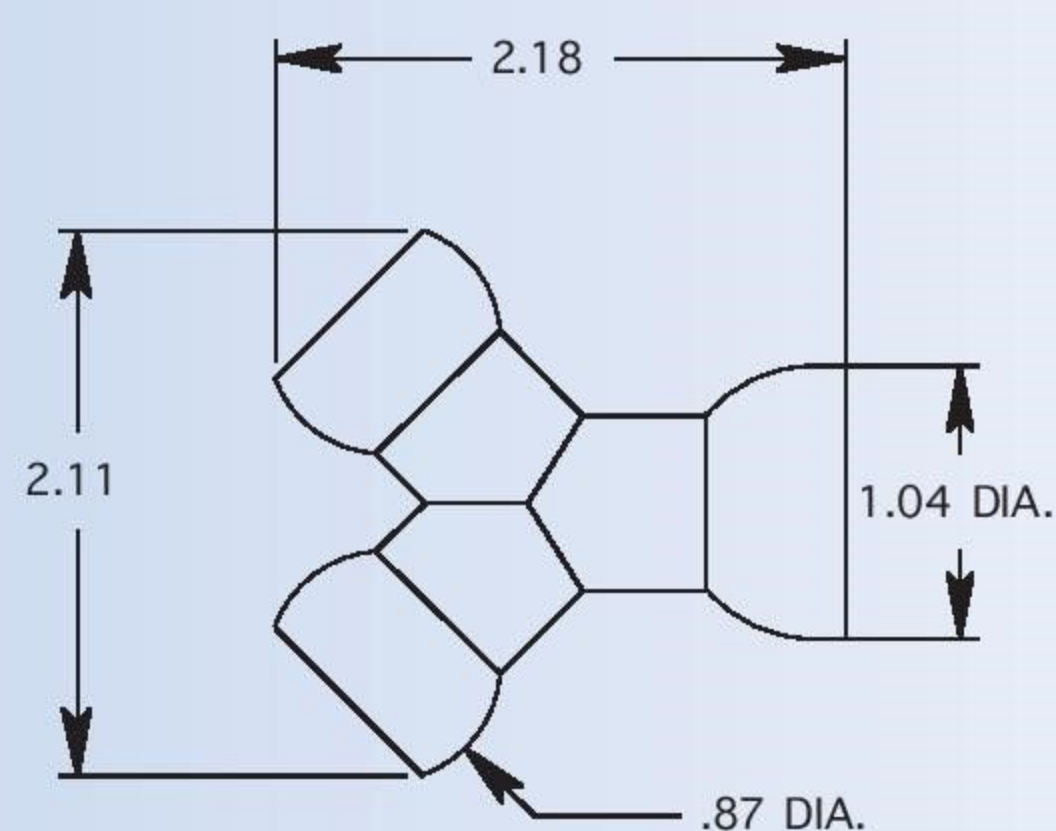
1/2" X 1/4" BODY SEGMENT ADAPTER



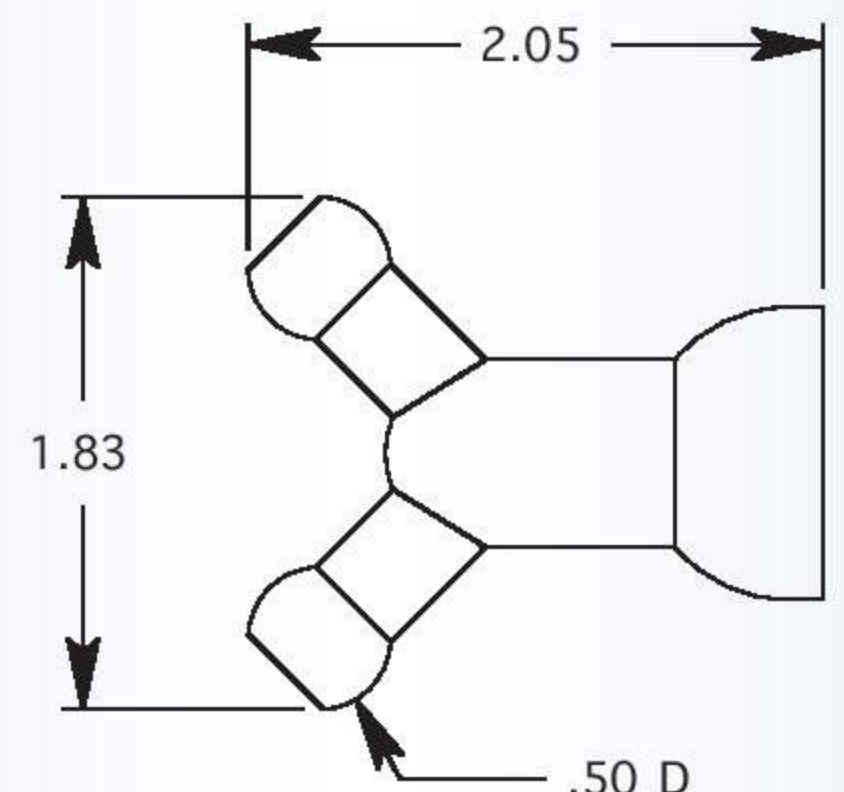
1/2" 90 DEGREE ELBOW



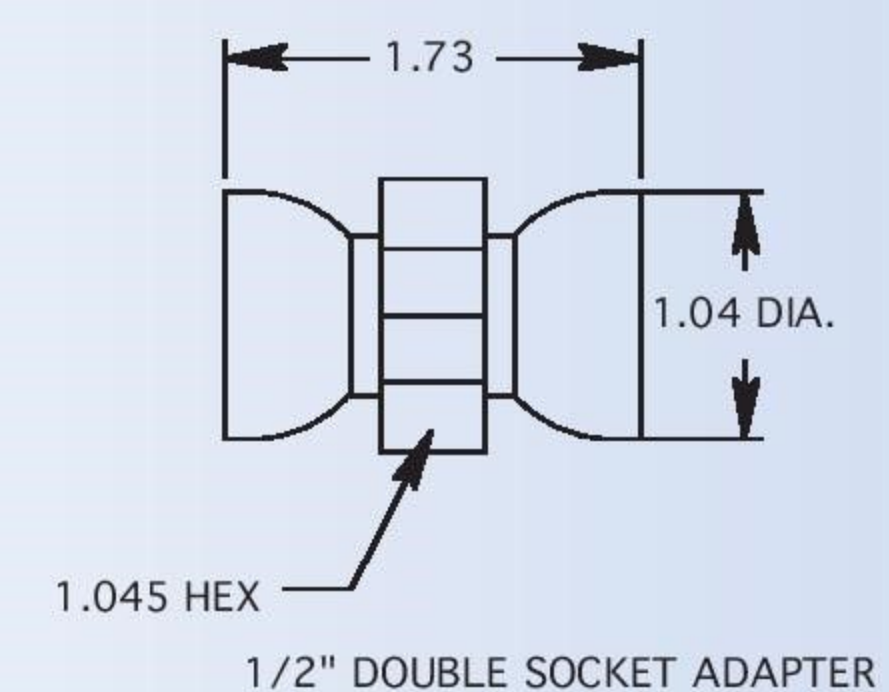
1/2" EXTENSION SEGMENTS



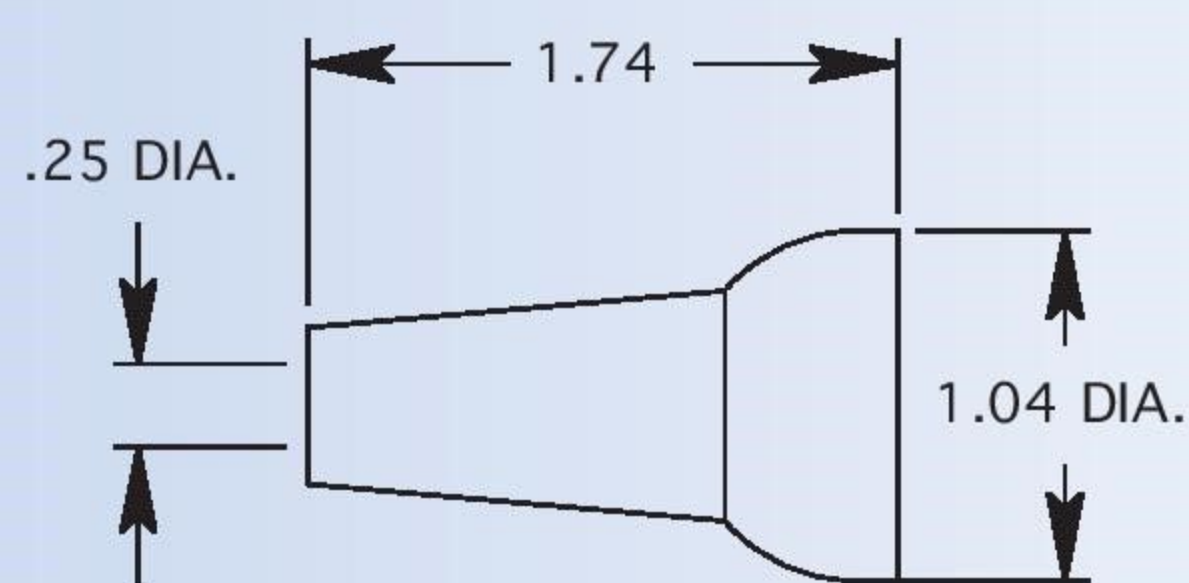
1/2" Y MOLDED



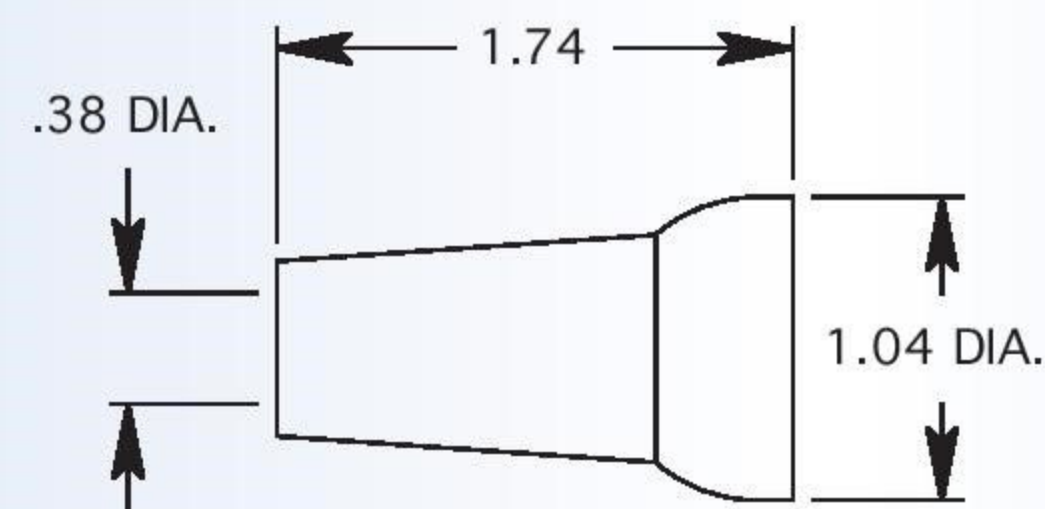
1/2" X 1/4" REDUCER Y - MOLDED STYLE



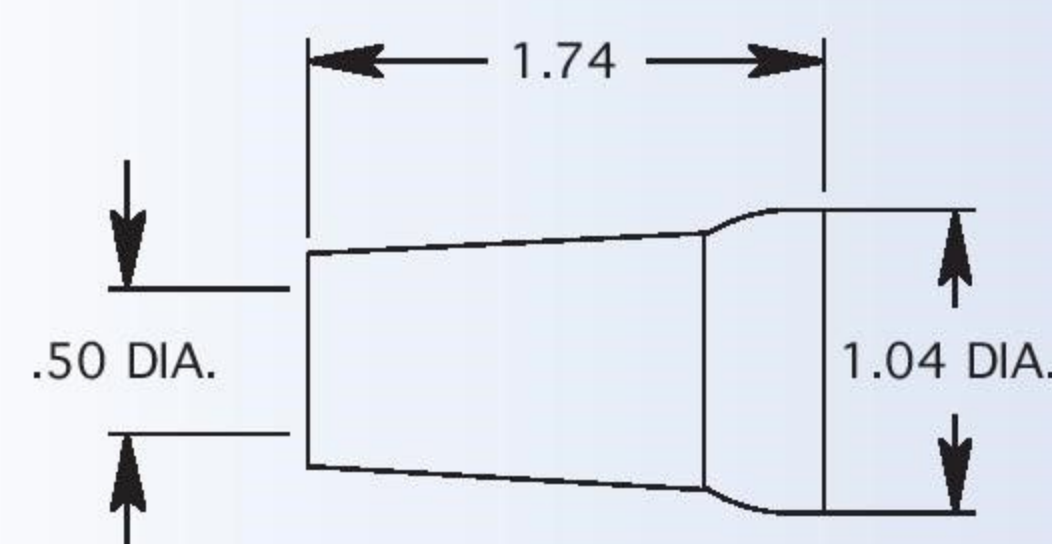
1/2" DOUBLE SOCKET ADAPTER



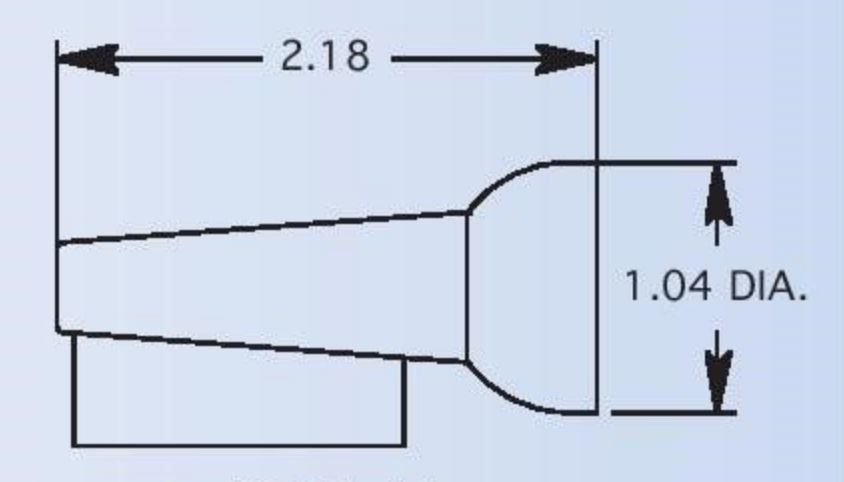
1/4" NOZZLE
1/4" NOZZLE



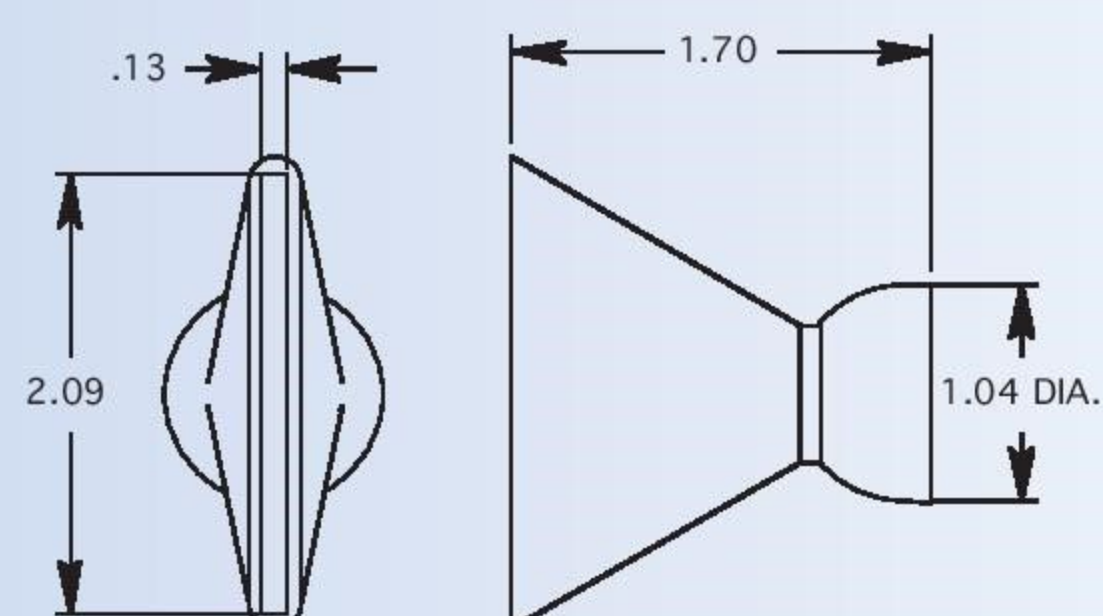
3/8" NOZZLE



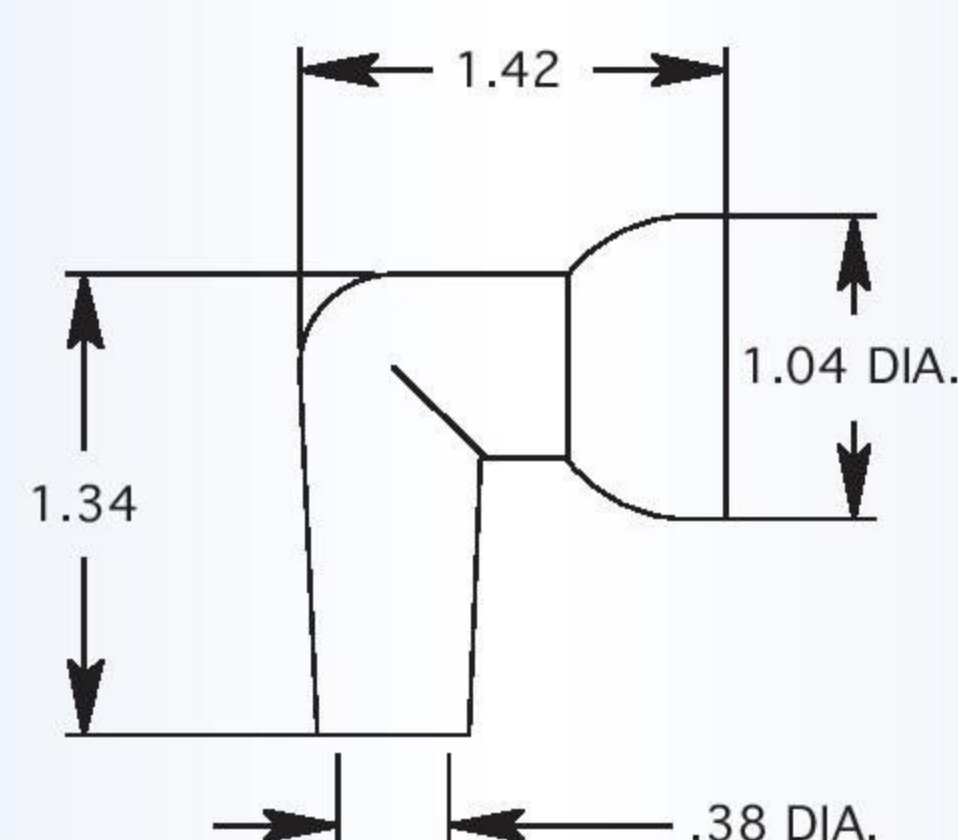
1/2" NOZZLE



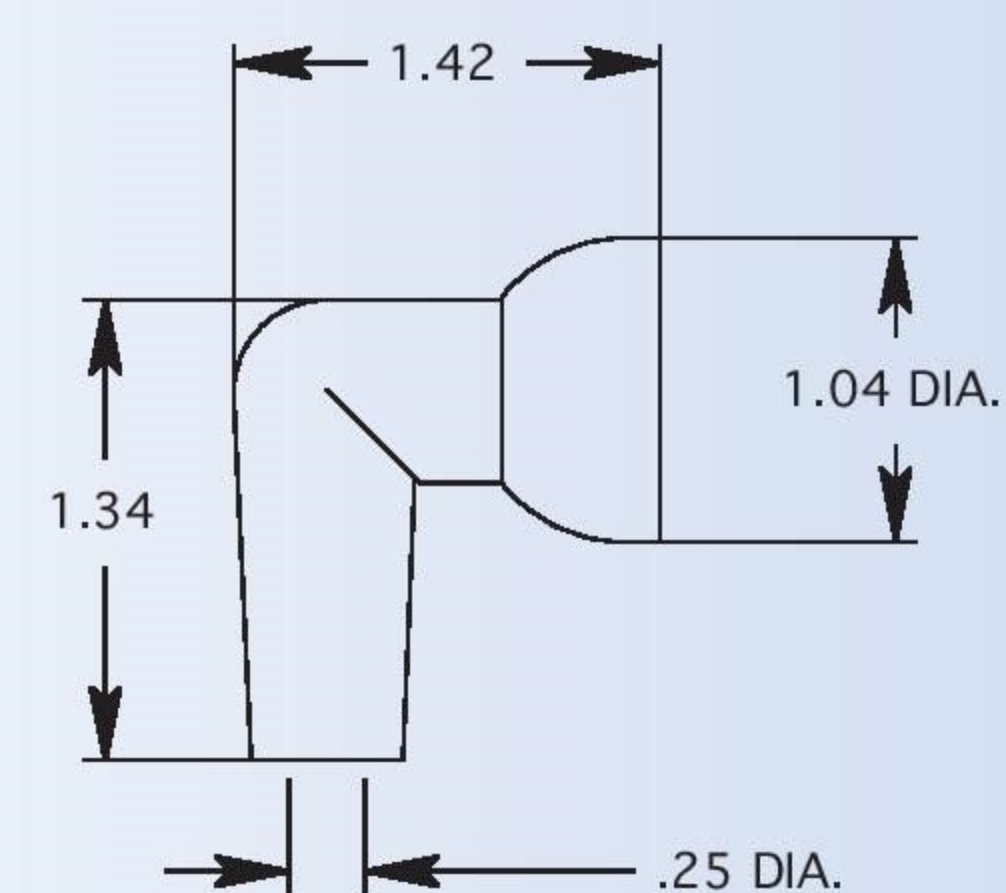
1/2" SIDE-SPRAY NOZZLE



2" FLARE NOZZLE
2" FLARE NOZZLE



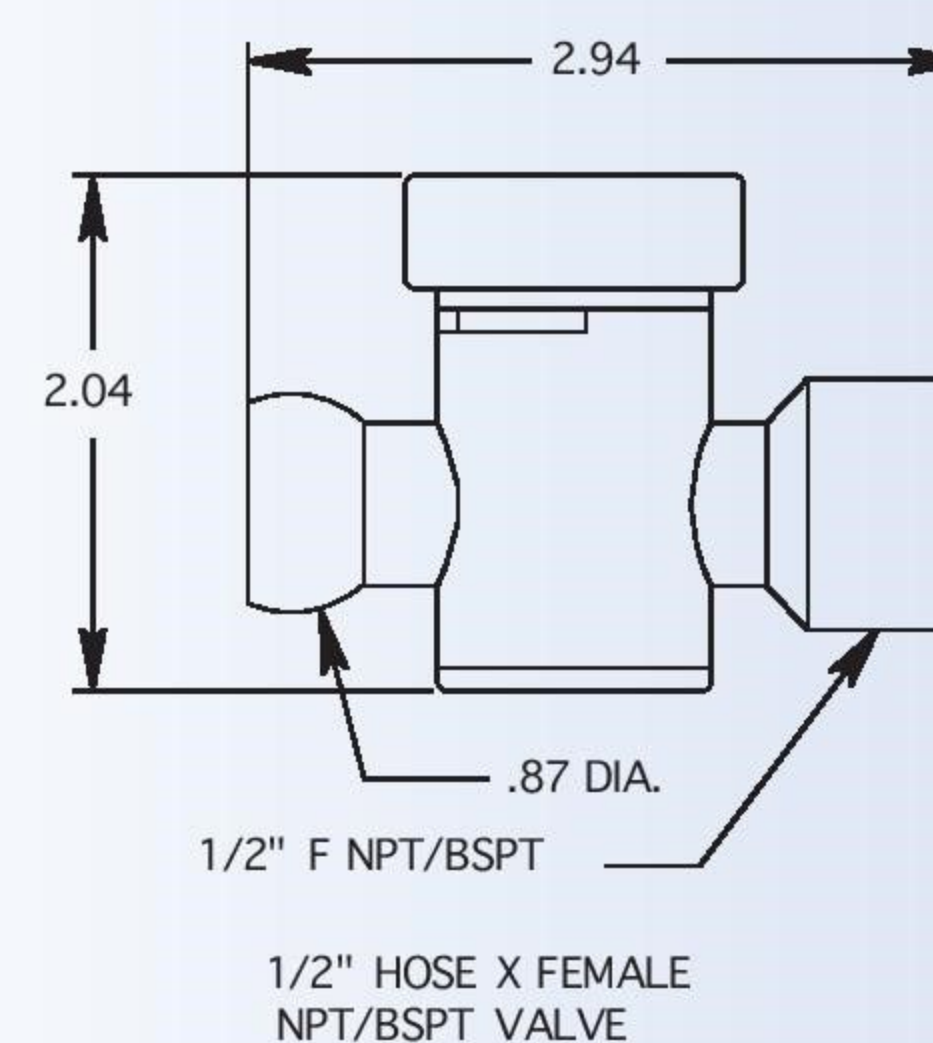
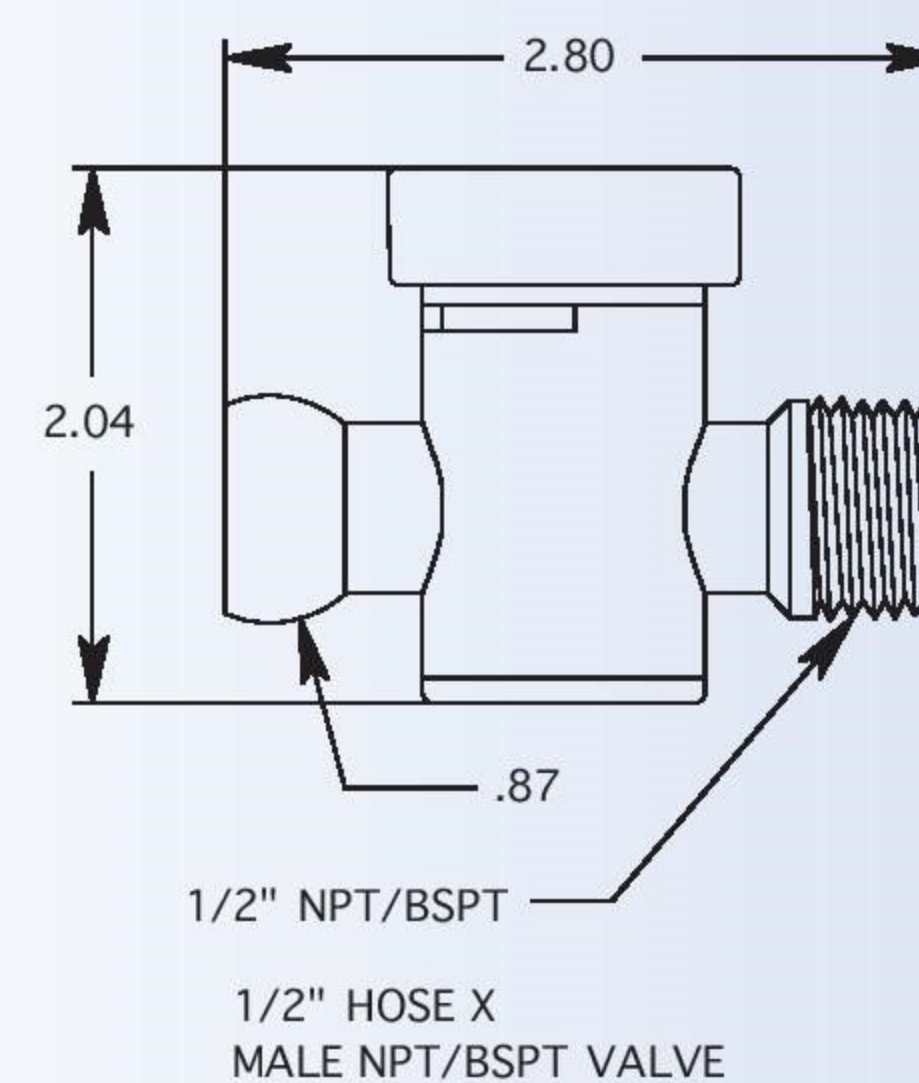
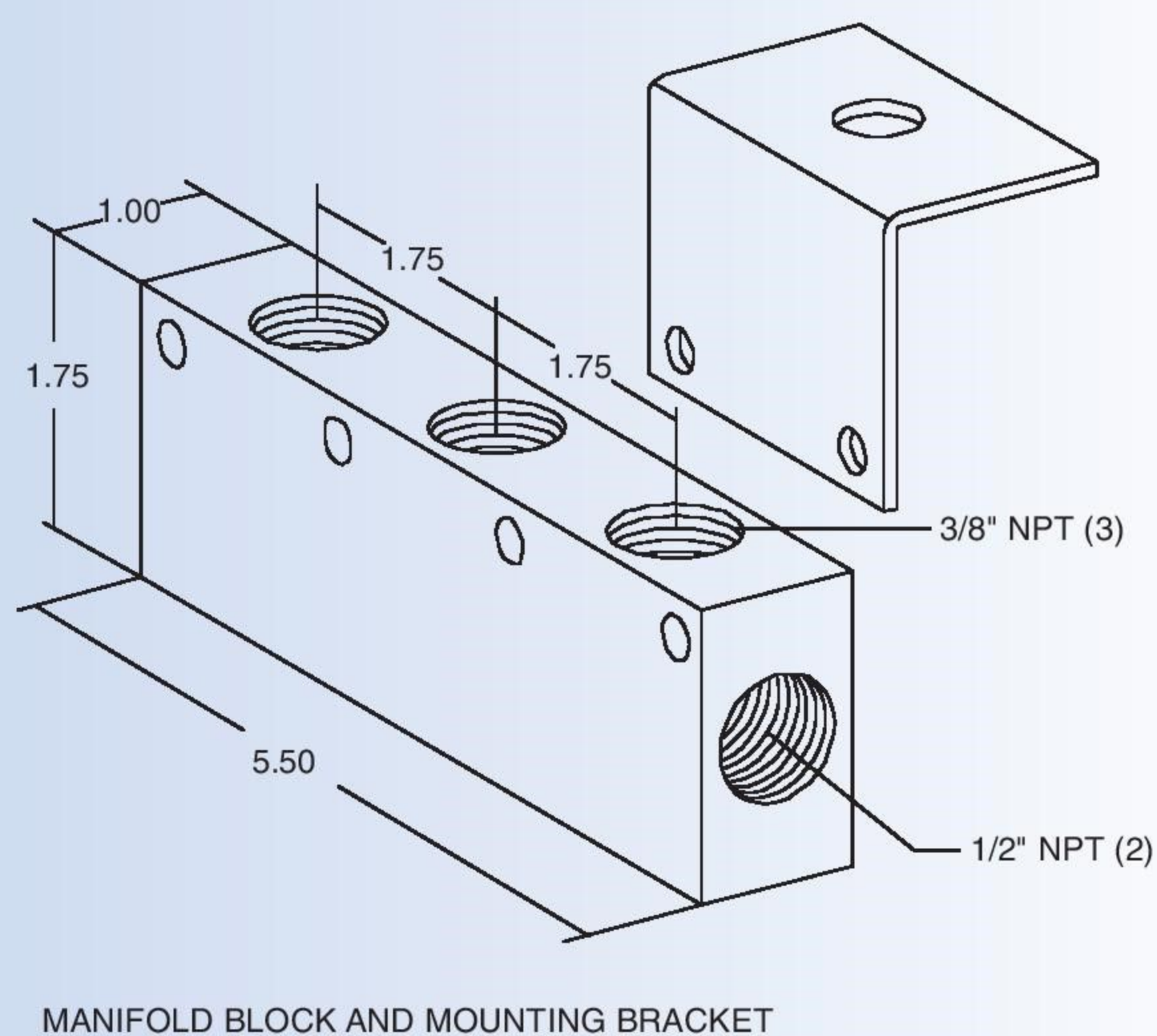
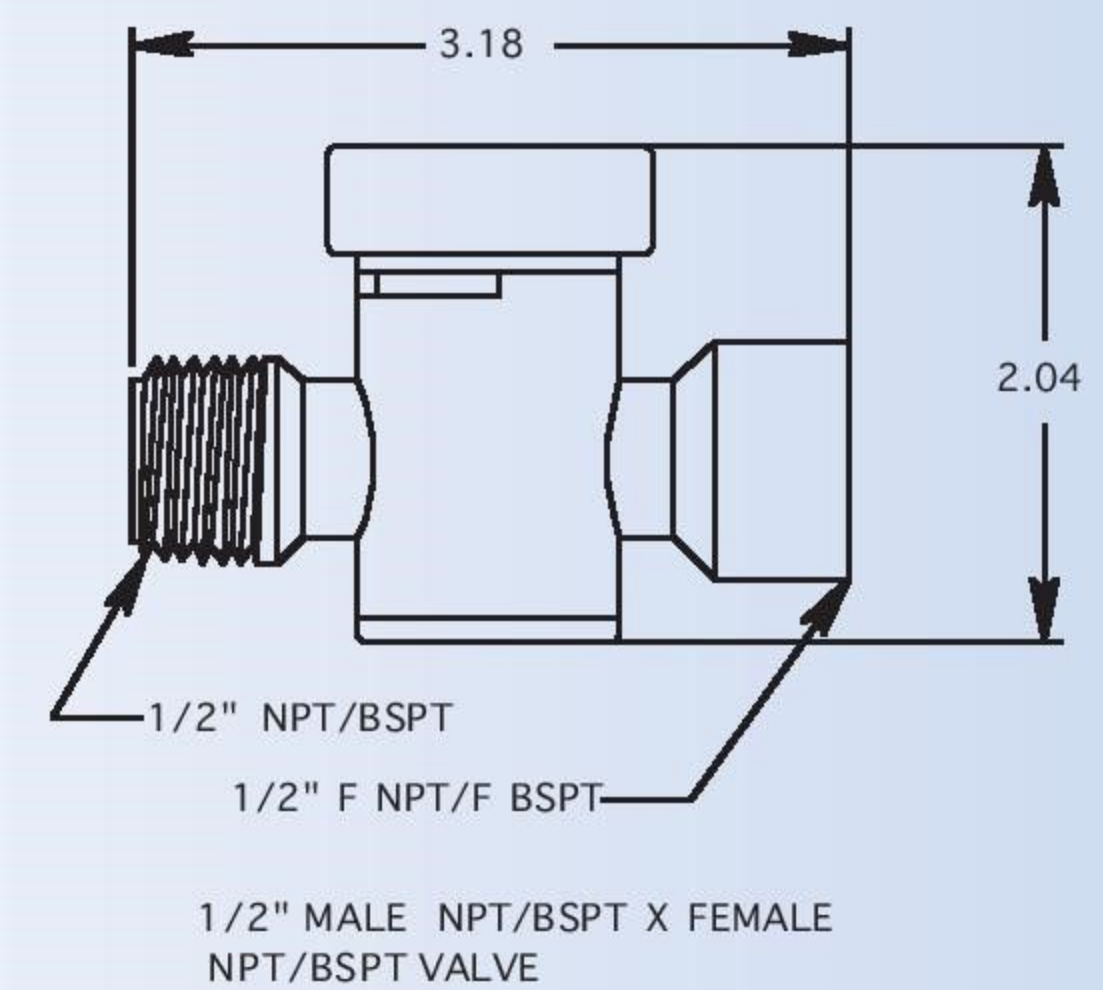
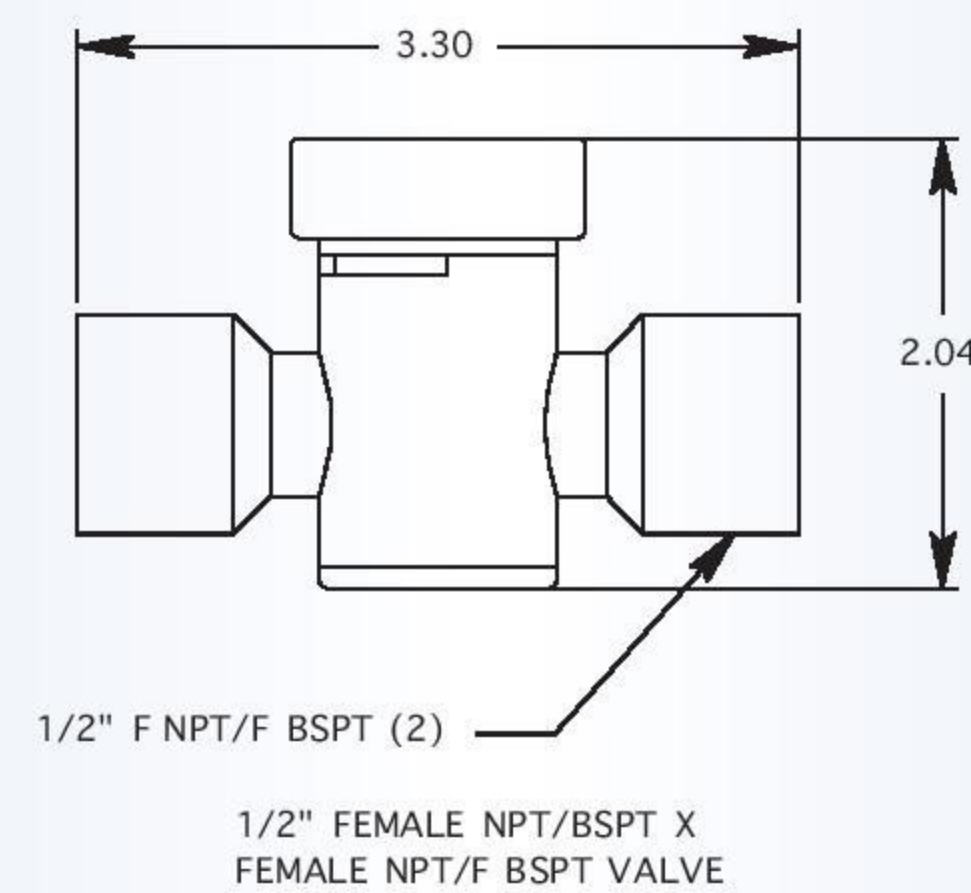
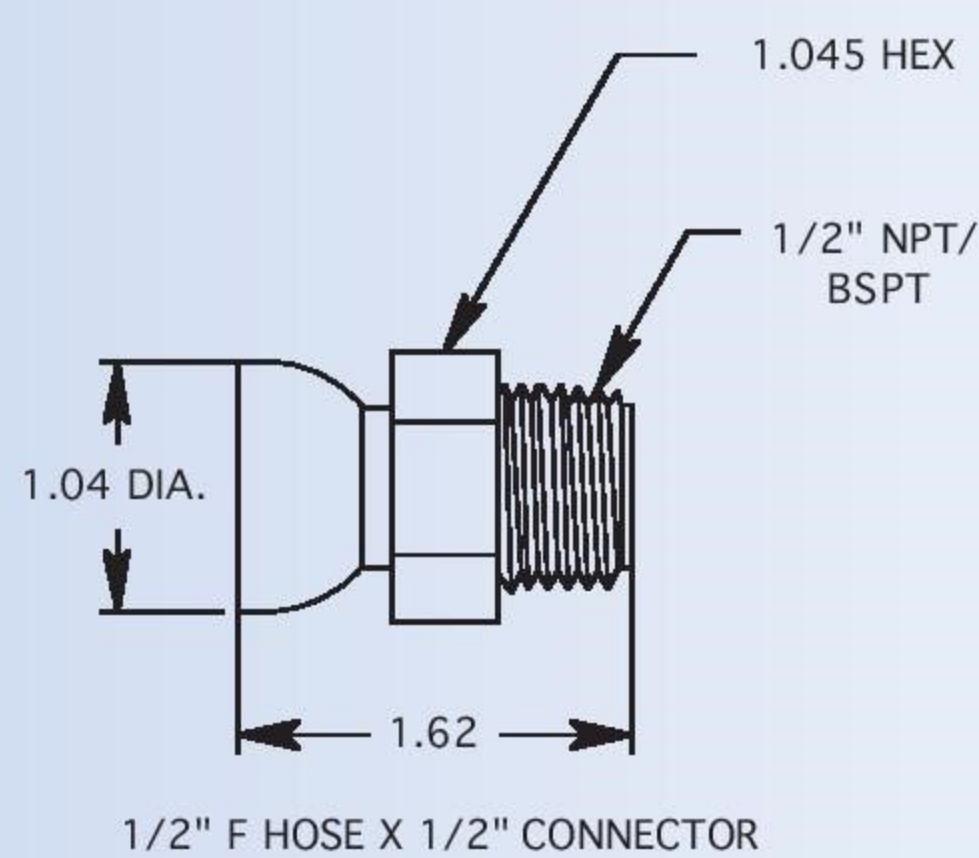
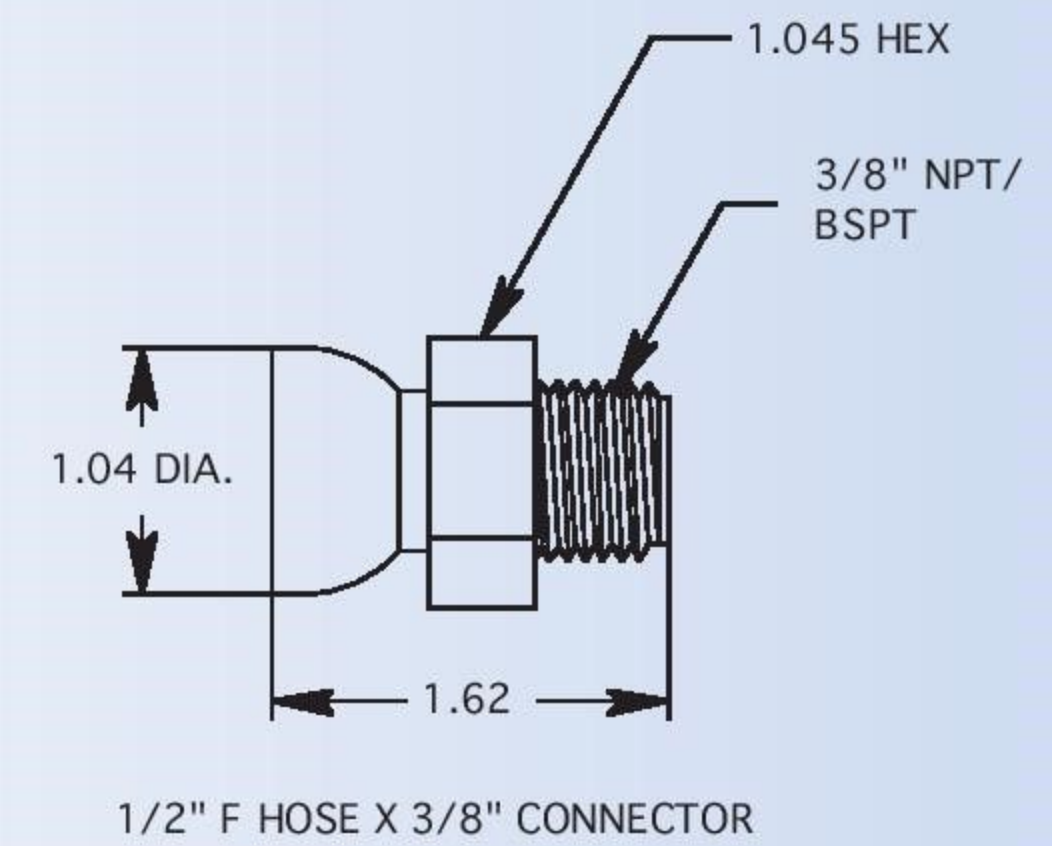
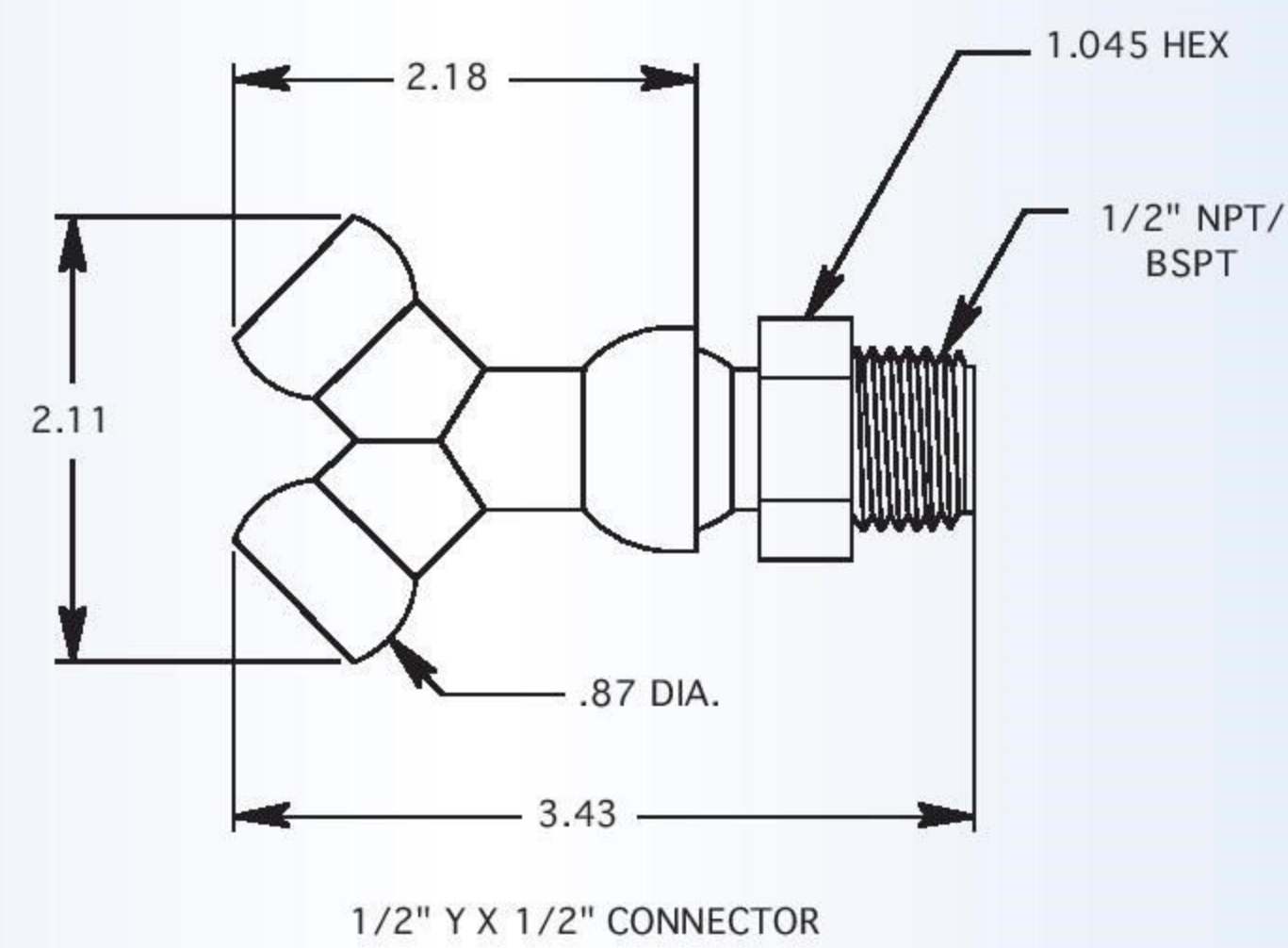
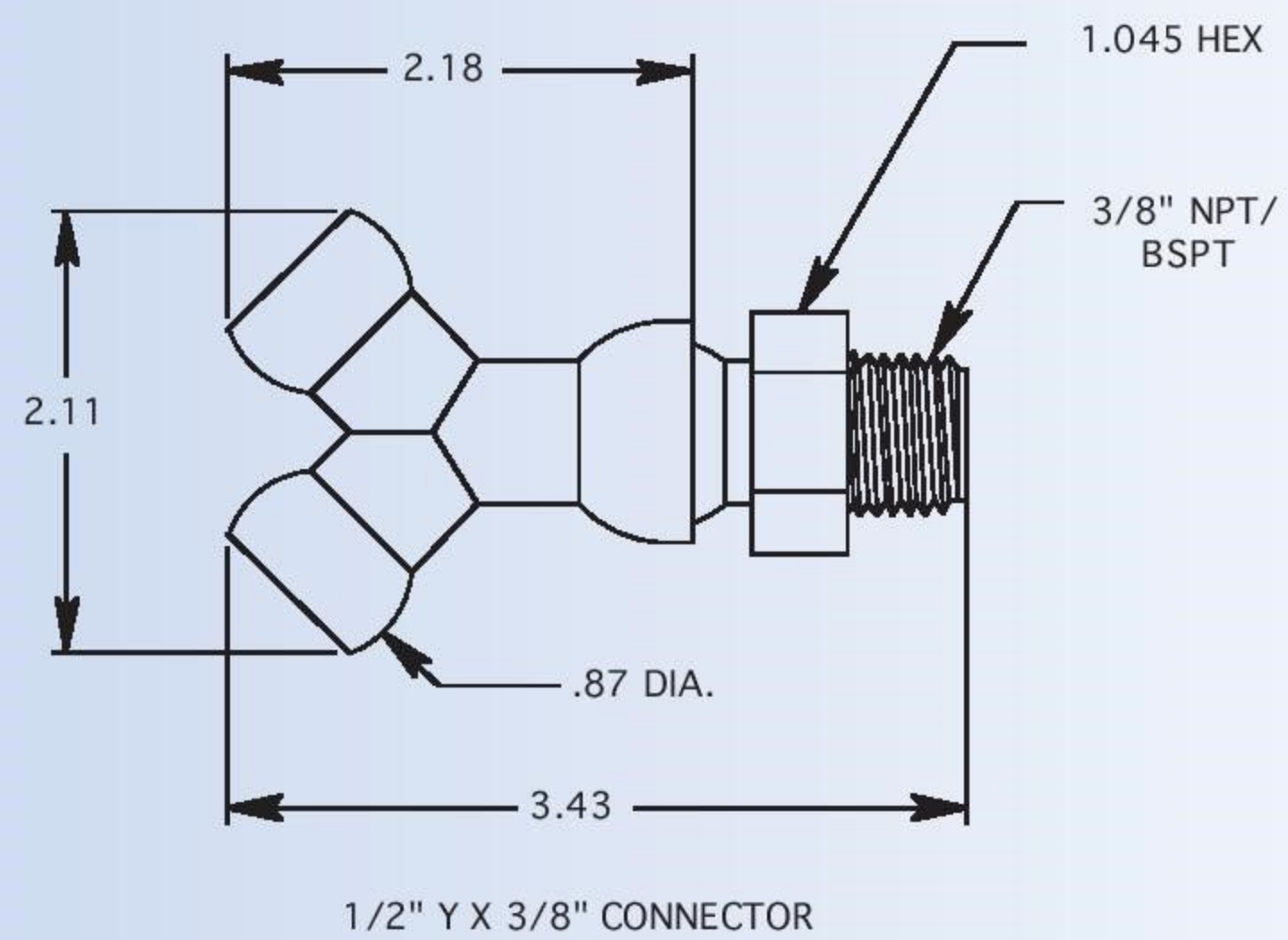
3/8" 90 DEGREE NOZZLE



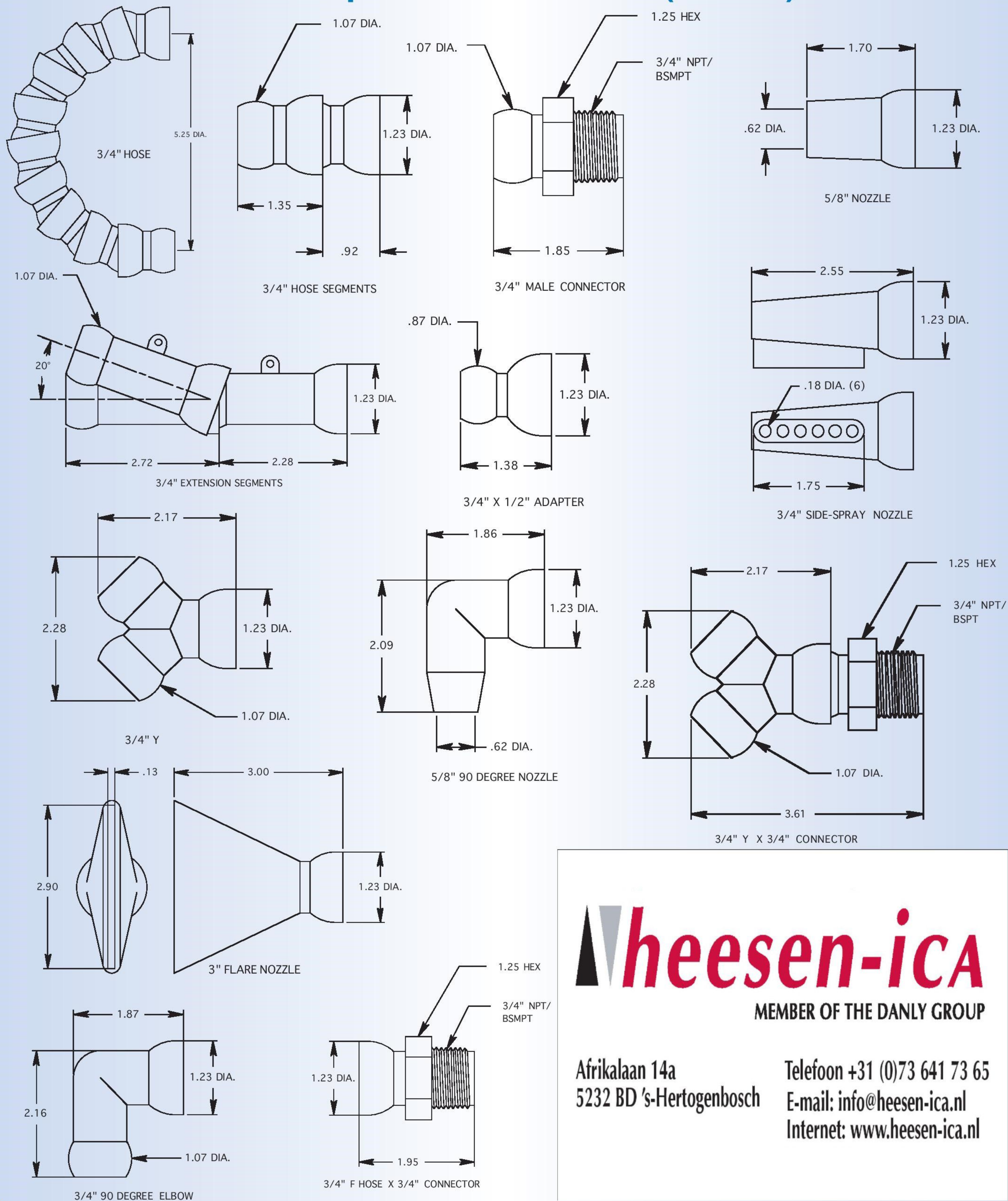
1/4" 90 DEGREE NOZZLE

Technical & Dimensional Data

1/2" Snap-Loc Dimensions (Inches)



3/4" Snap-Loc Dimensions (Inches)



heesen-ica

MEMBER OF THE DANLY GROUP

Afrikalaan 14a
5232 BD 's-Hertogenbosch

Telefoon +31 (0)73 641 73 65

E-mail: info@heesen-ica.nl

Internet: www.heesen-ica.nl